



FITTING INSTRUCTIONS FOR

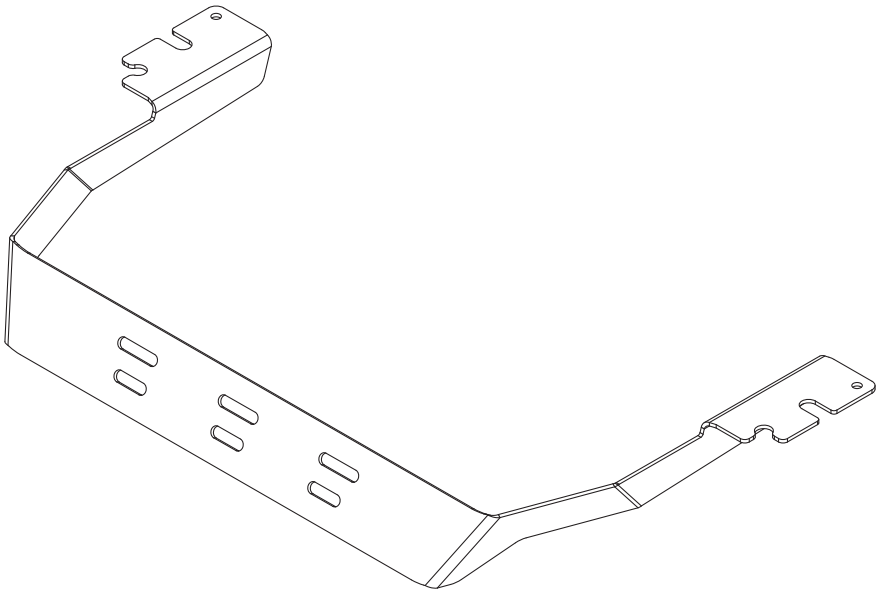
Fire Extinguisher Seat Mount

SKU

KS0981

COMPATIBILITY

Toyota HiLux N80, Fortuner



Included contents

QTY	COMPONENT
1	Extinguisher Mount
2	M5 x 12 Flat Flanged Bolt
2	M5 x Flat Flanged Nut



Time

30 minutes / Half a beer

Scan the **QR code** to watch the video installation guide,
or for further information contact KAON on **07 3180 1470** or **info@kaon.com.au**



Let's get to work.

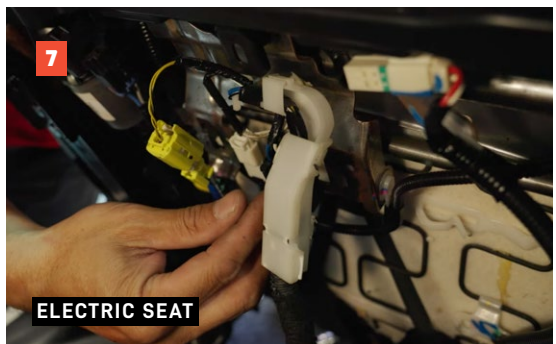
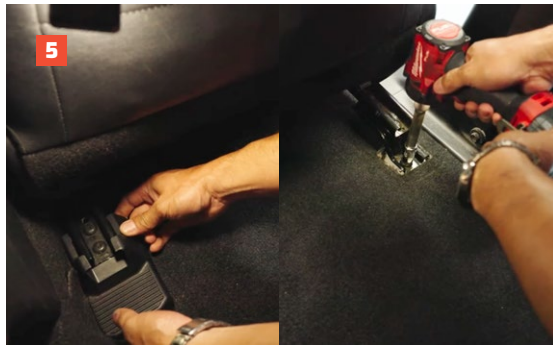
Preparation

1. We will need to remove the seat for the easiest installation of the bracket, so start by removing the headrest.
2. Using the levers on an electric seat or adjustment levers on a manual seat, tilt the backrest all the way forward and slide the seat to the rear-most position on the rails.
3. Using a 14mm socket, remove the front bolts connecting the seat to the car. Set aside.
4. With the front bolts now removed, slide the seat to the furthest forward position.
5. Undo the two rear trim clips and then the rear bolts connecting the seat rails to the car. Set aside.
6. **If your seat is manual:** you may now remove the seat from the vehicle, being careful on the trim on the way out.

If your seat is electric:

Move the seat back into the furthest forward position, and gently tilt the seat backwards to gain access to the underside, where the electrical components are connected. Unclip the 3 wired plugs connected to the seat. You may now remove the seat from the vehicle, being careful of the trim on the way out.

7. Place the seat on a surface with the backrest laying flat and the underside of the seat facing up.
8. **For electric seat installation:** proceed with step 9 on page 3.
For manual seat installation: Proceed with step 23 on page 6.



Installation with Electric Seats

9. The Extinguisher Bracket connects to the two front bolts at the underside of the seat. For the easiest access to left bolt, we will need to temporarily remove the trim.

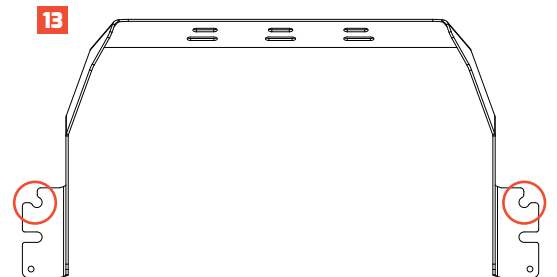
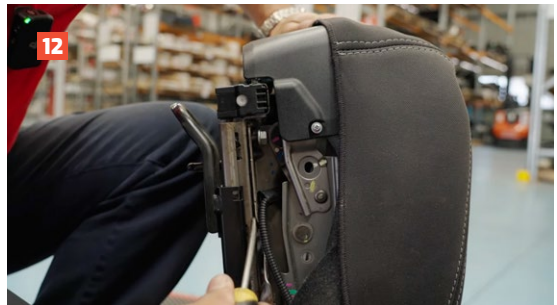
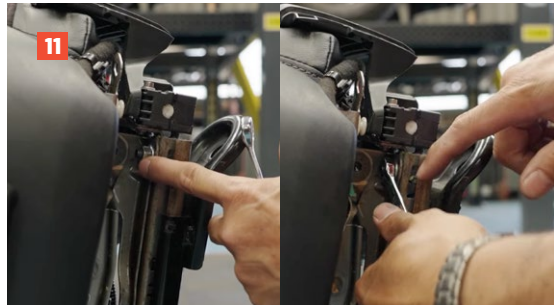
Starting from the back, unclip and pull off the trim on the left side of the seat. Noting that some of the clips will be tight and difficult to remove, and you will also need to unclip the blue plug connected to the seats' motor.

10. Push the left side trim to one side, so that you have clear access to the mounting bolt.

11. Using a 12mm spanner, loosen off the nut until just at the end of the thread on each side.

12. The extinguisher bracket will be sandwiched between the seat rails and frame. To be able to place the bracket in position, we will need to leverage the frame upwards, away from the rails to create a gap. This can be done by wedging a screwdriver between the rail and seat frame on each side.

13. You will notice two different kinds of openings on the extinguisher bracket. For the electric seat, we will be using the front mounting slot indicated.

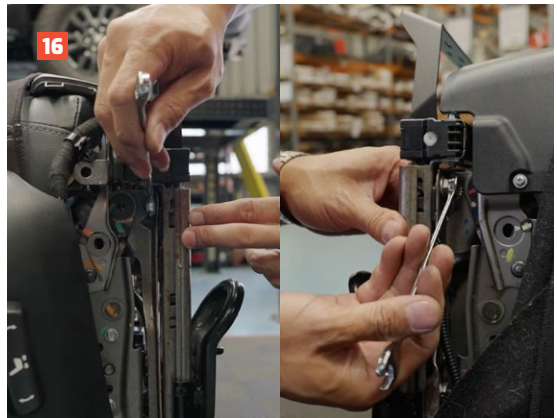
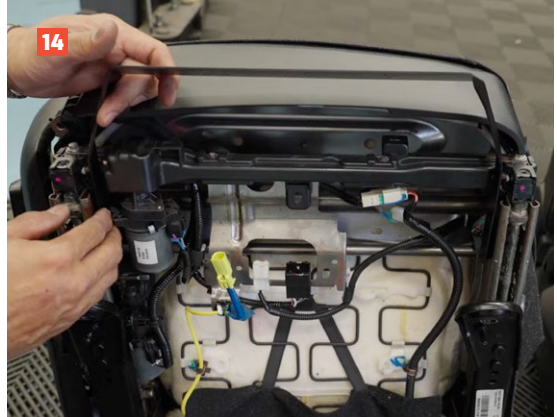


Installation with Electric Seats cont.

14. Place the extinguisher bracket in position in between the seat rails and parallel with the front of the seat. The bracket has some flex, and can be squeezed slightly in order to fit between the rails.

Slide the required slot on each side over the bolts, sandwiched in the gap create between the sliding rail and frame. Manoeuvre until the bracket is securely in place.

15. With the bracket in position, remove the screwdriver to close the gap on each side.
16. Tighten the nut on each side of the seat rails.
17. Replace the trim on the left hand side of the seat, ensuring that you also re-attach the plug for the motor.



Installation with Electric Seats cont.

18. With the seat still out of the vehicle, now is the best time to install your fire extinguisher. We've supplied some M5 hardware to make this simpler.
19. Place the seat back in position in the vehicle and reattach the electrical components.
20. Check that the extinguisher bracket slides with the seat when moving forward and backward.
21. Reattach the rails to the vehicle using the bolts and trim set aside earlier. Tighten until secure.
22. Finally, replace the headrest. That's it – you're done!

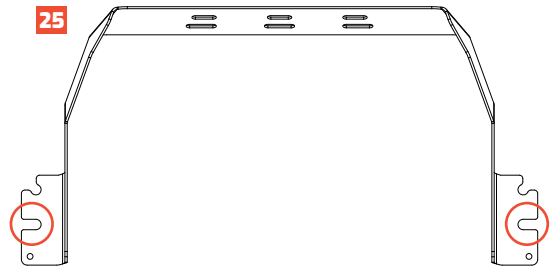


Installation with Manual Seats

23. The adjustment lever on the seat will need to be removed for best access to the mounting locations. To do this, remove the spring clips holding the lever in place on both sides of the seat. Set aside.
24. Locate the mounting bolts toward the front of the seat on each side. Loosen off the nut, creating a gap for the extinguisher bracket to slot on to.
25. You will notice two different openings on each side of the extinguisher bracket. For the manual seat, we will be using the back mounting slot indicated.
26. Place the extinguisher bracket in position in between the seat rails and parallel with the front of the seat. The bracket has some flex, and can be squeezed slightly in order to fit between the rails.

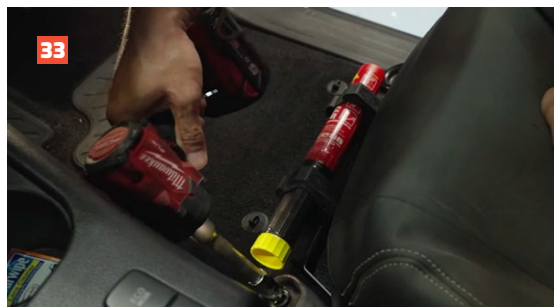
Slide the required slot on each side over the mounting bolts, and manoeuvre until the bracket is securely in place.

27. Tighten the nuts on each side of the seat rails.



Installation with Manual Seat cont.

- 28. Replace the spring clips on both sides of the seat.
- 29. Place the adjustment lever back into position.
- 30. With the seat still out of the vehicle, now is the best time to install your fire extinguisher. We've supplied some M5 hardware to make this simpler.
- 31. Place the seat back in position in the vehicle.
- 32. Check that the extinguisher bracket slides with the seat when moving forward and backward.
- 33. Reattach the rails to the vehicle using the bolts and trim set aside earlier. Tighten until secure.
- 34. Finally, replace the headrest. That's it – you're done!



G8.8 Bolt Torque (Non-Lubricated)

DIAMETER (mm)	5mm	6mm	8mm	10mm	12mm
NEWTON-METRES (Nm)	6 Nm	10 Nm	15 Nm	22 Nm	35 Nm



Local Knowledge & Assistance

We know half the fun of building your dream 4x4 is getting your hands dirty. But we also know that sometimes, things don't go to plan. If in the pursuit to build the ultimate setup you find yourself off-track, we're here to help you get unstuck.

For further information call 07 3180 1470 or email info@kaon.com.au

Disclaimer: The products sold by KAON should not be modified, and are for use only on the vehicles specifically stated. KAON will not be liable for any damages arising out of the use or misuse of it's products. It is the customers responsibility to ensure the products are safely and properly used and installed. KAON consistently seeks to improve it's products and reserves the right to make changes to any product.