



FITTING INSTRUCTIONS FOR

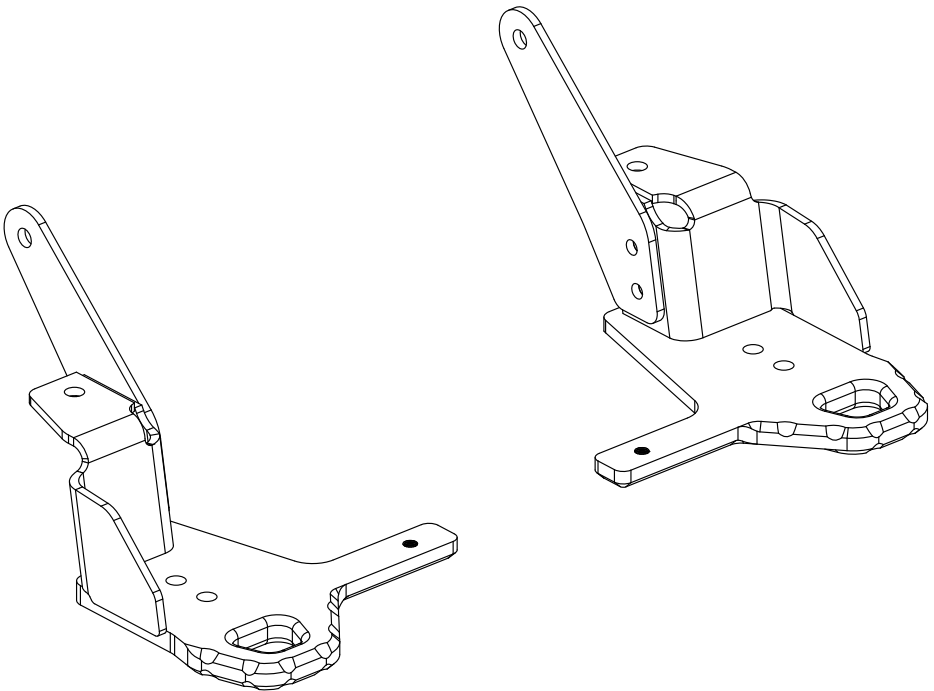
# Recovery Tow Points


SKU

**KS0963/964**

COMPATIBILITY

**Toyota Prado 250**



|   |                   |
|---|-------------------|
|  <b>Time</b> | 1 Hour / One Beer |
|---|-------------------|

Scan the **QR code** to watch the video installation guide,  
or for further information contact KAON on **07 3180 1470** or [info@kaon.com.au](mailto:info@kaon.com.au)



# What's Included.

| Included contents |                                      |     |                                    |
|-------------------|--------------------------------------|-----|------------------------------------|
| QTY               | COMPONENT                            | QTY | COMPONENT                          |
| 2                 | Prado 250 Recovery Point (RHS & LHS) | 4   | M12 x 1.25 x 50 Hex Bolt G10.9     |
| 2                 | Rear Bracket                         | 8   | M12 x 24 x 2.5 High Tensile Washer |
| 2                 | Wire Bolt                            | 2   | M10 x 1.25 x 20 Hex Bolt           |
| 2                 | Nut Block Wire                       | 10  | M10 x 30 x 2.5 DIN Flat Washer     |
| 2                 | 5000KG WLL Sticker                   | 4   | M10 x 30 Flanged Hex Bolt G8.8     |
| 2                 | M12 x 1.25 x 40 Hex Bolt G10.9       | 4   | M10 Flanged Nut                    |
| 2                 | M12 Hex Nut                          | 2   | M10 x 20 DIN Flat Washer           |

| G10.9 Bolt Torque   |       |       |        |        |
|---------------------|-------|-------|--------|--------|
| DIAMETER (mm)       | 8mm   | 10mm  | 12mm   | 14mm   |
| LUBRICATED (Nm)     | 24 Nm | 50 Nm | 94 Nm  | 120 Nm |
| NON-LUBRICATED (Nm) | 35 Nm | 68 Nm | 125 Nm | 160 Nm |

| G8.8 Bolt Torque    |      |       |       |       |       |        |
|---------------------|------|-------|-------|-------|-------|--------|
| DIAMETER (mm)       | 5mm  | 6mm   | 8mm   | 10mm  | 12mm  | 14mm   |
| LUBRICATED (Nm)     | 5 Nm | 8 Nm  | 16 Nm | 33 Nm | 56 Nm | 84 Nm  |
| NON-LUBRICATED (Nm) | 6 Nm | 10 Nm | 22 Nm | 44 Nm | 77 Nm | 112 Nm |

# Let's get to work.

## Preparation

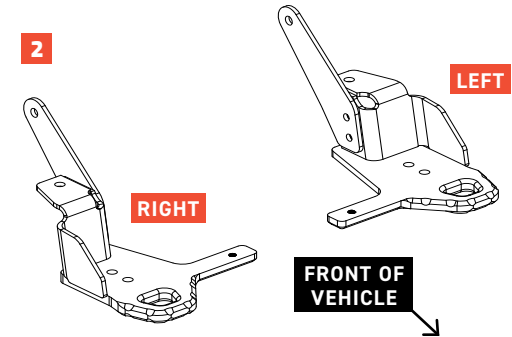
1. Start by clearing access to the Recovery Points by removing the wind guard, any factory or aftermarket UVP in the area, and the factory tie down points.

**Please note:** If you have the KAON Front Guard installed, you will also need to remove the chassis bracing components. The bracing will be replaced by the support arms built in to the recovery points.



## Installation

2. Identify the left and right recovery point. They will be installed in the vehicle in the orientation pictured.



## Installation cont.

3. Place a recovery point on it's corresponding side of the vehicle and loosely secure the position with two M12 bolts and washers through the central surface.
4. Next, attach the recovery point to the cross member using the shorter M10 x 20 Hex bolt, and two stacked M10 washers. Use two different widths for the washers, with the smaller one (M10 x 20) on top of the wider one (M10 x 30) to fill the wider opening.
5. To attach the recovery point to the bottom of the chassis, we have supplied a bolt on a wire. The wire has notches in order to make it easier to fold and feed through the chassis.

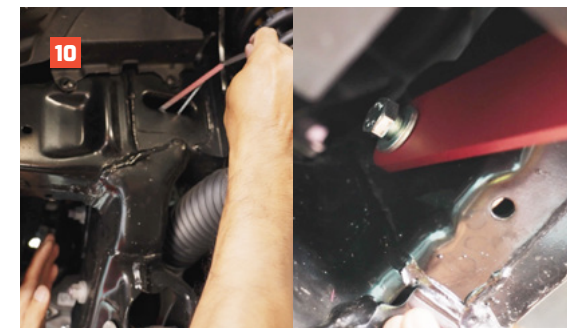
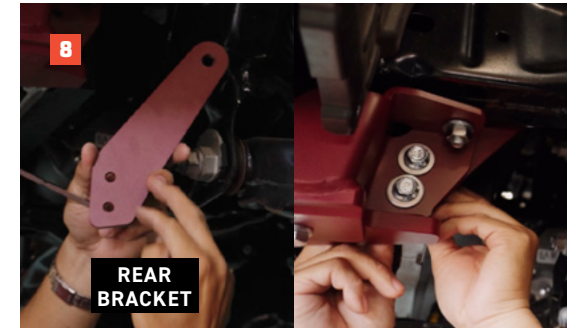
At the first notch, fold the bolt on a wire upwards at a 45 degree angle. At the second notch, bend the wire 45 degrees again in the direction pointing outwards from the vehicle, depending on the side you are installing to. Bend the wire at the last notch slightly outwards again.

We recommend holding up the folded wire adjacent to the position it will feed through in the chassis, to help ensure each notch is bent in the correct direction.



## Installation cont.

6. Feed the bent wire through the chassis toward the rear mounting location of the recovery point. You will need to feed the bolt through the hole in the chassis and through the recovery point, as pictured.
7. Loosely secure the bolt with an M12 washer and nut.
8. Attach the rear bracket to the inside of the recovery points using the M10 bolts and nuts.
9. Locate the Nut on a wire. At both notches, bend the wire upwards at roughly a 45 degree angle.
10. To secure the rear bracket at the top, locate the same opening on the chassis used previously. Feed the supplied nut on a wire through the chassis, to the mounting location on other side.
11. Secure the nut with an M12 bolt and washer through the top of the back bracket.



## Installation cont.

12. With all bolts fitted to the recovery point, tighten all bolts until secure. This will make torquing easier.
13. Torque the bolts in the following order: Bottom M12s, M10's and M12 at the rear side and M10 on the crossmember last. Ensure you torque to the following specs:

**Lubricated M12 Bolts:** 94 Nm

**Non-lubricated M12 Bolts:** 125 Nm

**Lubricated M10 Bolts:** 33 Nm

**Non-lubricated M10 Bolts:** 44 Nm

It's worth noting that if you are also installing KAON Under Vehicle Protection, you will later need to remove the front crossmember M10 bolt and washers, as per their installation instructions. We still recommend torquing all bolts at this point to ensure the recovery point is seated correctly against the chassis.

14. Repeat the installation process for the recovery point on the other side of the vehicle.
15. If you are installing the KAON X700 Front Guard, now is the time to install it to the vehicle. Remove the M10 bolt and washers in the front cross member and follow the installation instructions for this product.
16. Now reinstate the factory wind guards and trim removed in the beginning. Apply the supplied warning sticker, adjacent to the recovery point.
17. That's it – you're done!  
Stand back, admire your pride and joy and thank yourself for having such great taste in recovery points... if we do say so ourselves.



## WARNING

This product must be installed exactly as per these fitting instructions and using only the components supplied. Do not use this Recovery Tow Point for any vehicle make or model other than the one intended and specified by KAON. Do not alter or modify the Recovery Tow Point in any way. Doing so may compromise the points strength and integrity.

Ensure the warning label is affixed adjacent to the recovery point, and do not remove the label for any reason. Ensure that fasteners are tightened to specified torque.

Whenever venturing off-road or on an annual service basis, KAON recommends a thorough inspection of the Recovery Tow Point. It is advised that all components are checked and tightened to the specified torque, and any components are replaced as necessary.



## **Local Knowledge & Assistance**

We know half the fun of building your dream 4x4 is getting your hands dirty. But we also know that sometimes, things don't go to plan. If in the pursuit to build the ultimate setup you find yourself off-track, we're here to help you get unstuck.

**For further information call 07 3180 1470 or email [info@kaon.com.au](mailto:info@kaon.com.au)**

Disclaimer: The products sold by KAON should not be modified, and are for use only on the vehicles specifically stated. KAON will not be liable for any damages arising out of the use or misuse of its products. It is the customers responsibility to ensure the products are safely and properly used and installed. KAON consistently seeks to improve its products and reserves the right to make changes to any product.