



FITTING INSTRUCTIONS FOR

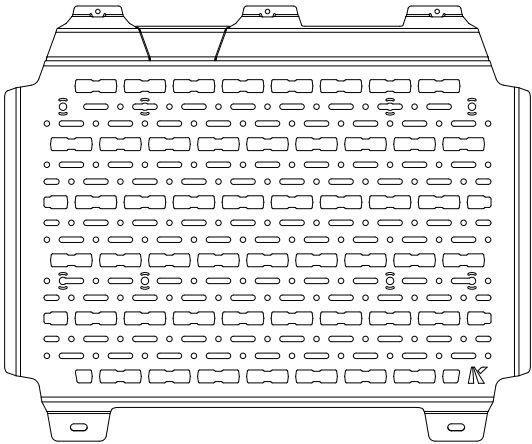
Exterior Molle Panel


SKU

KS0978

COMPATIBILITY

Ineos Grenadier Wagon Models



Included contents			
QTY	COMPONENT	QTY	COMPONENT
1	Exterior Molle Panel	4	M8 x 20 Button Head Socket Screw
2	Exterior Molle Top Mount (Large & Small)	8	M8 x 16 x 1.5 Washer
1	Exterior Molle Infill Panel	4	M8 Nyloc Nut
2	M10 L Track Stud and Locator	3	M6 x 50 ZP Hex Bolt
2	M10 Nyloc Nut	3	M6 x 18 x 1.5 Washer
2	M10 x 30 x 2.5 Washer	<div> Time 30 minutes / Half a beer</div>	
6	Rubber Bumper		

Scan the **QR code** to watch the video installation guide,
or for further information contact KAON on **07 3180 1470** or **info@kaon.com.au**



Things to consider before mounting your Exterior Molle.

When using the Exterior Molle Panels to mount accessories to your vehicle, there are a few things to consider before installation to ensure best practice, safe use and legal compliance.

1. Exterior Molle Panel Loading

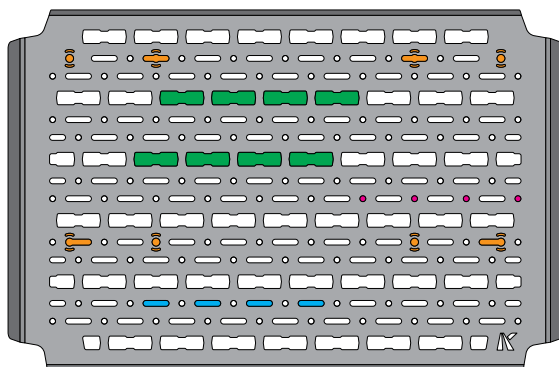
Ensure that you adhere to the weight limit when mounting accessories to the panels.

The maximum load each panel can safely carry is 40kg. Ensure that the mounted accessories do not exceed this limit.

2. Recommended Uses for the Exterior Molle Panel

We do not recommend mounting dangerous goods such as petrol to the Exterior Molle Panels.

Although you may be able to legally mount fuel or other dangerous goods on the Exterior Molle Panels under your local jurisdiction, we advise against using them for this purpose. Refer to the **diagram below** for examples of the kinds of accessories recommended for your Exterior Molles instead.



**MAXTRAX
MINI/ LITE**



**VAAST/
ROTOPAX**



**MOLLE/
PALS MESH**



**GENERAL
ACCESSORIES**

3. Checks and Maintenance

We recommend doing regular checks and maintenance on your Exterior Molle Panels.

Best practice when using the Exterior Molle Panels includes ensuring that any mounted accessories are securely fastened and checking that hardware securing them to the rack is also correctly fastened.

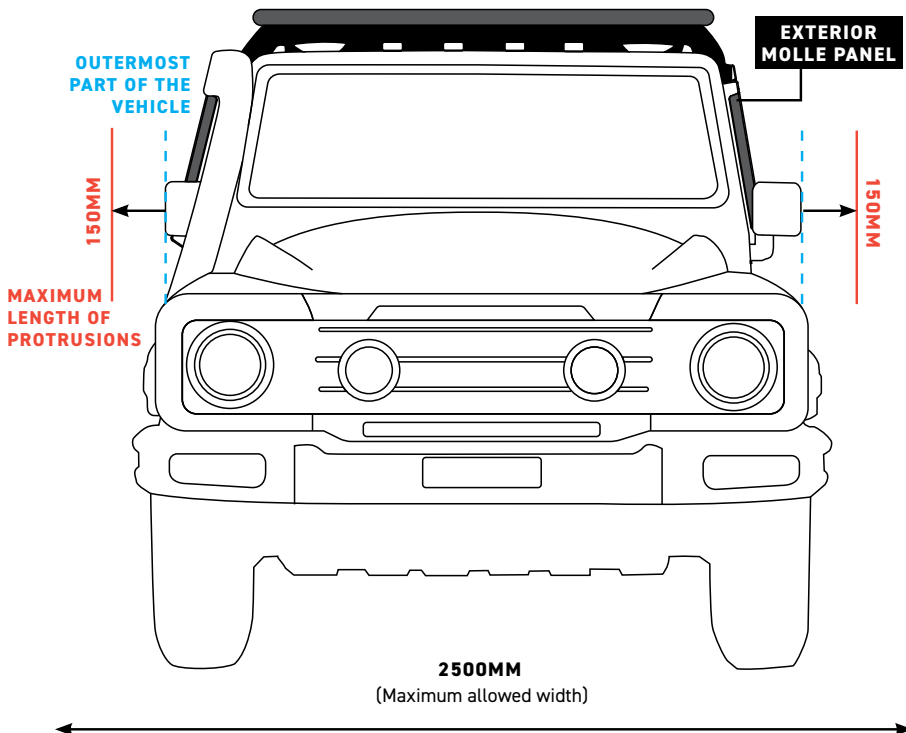
4. Legal Compliance for Vehicle Projections

There are legal requirements regarding vehicle projections that must be considered when mounting to the exterior of your vehicle.

Under the Load Restraint Guide for Light Vehicles (2018) by the Australian National Transport Commission, projections must not exceed 150mm from the outermost part of the vehicle on either side. Additionally, the total width of the vehicle and protrusions must not exceed 2500mm.

If you are located outside of Australia, we recommend contacting your local regulatory body to confirm what the legal requirements are for vehicle projections in your area.

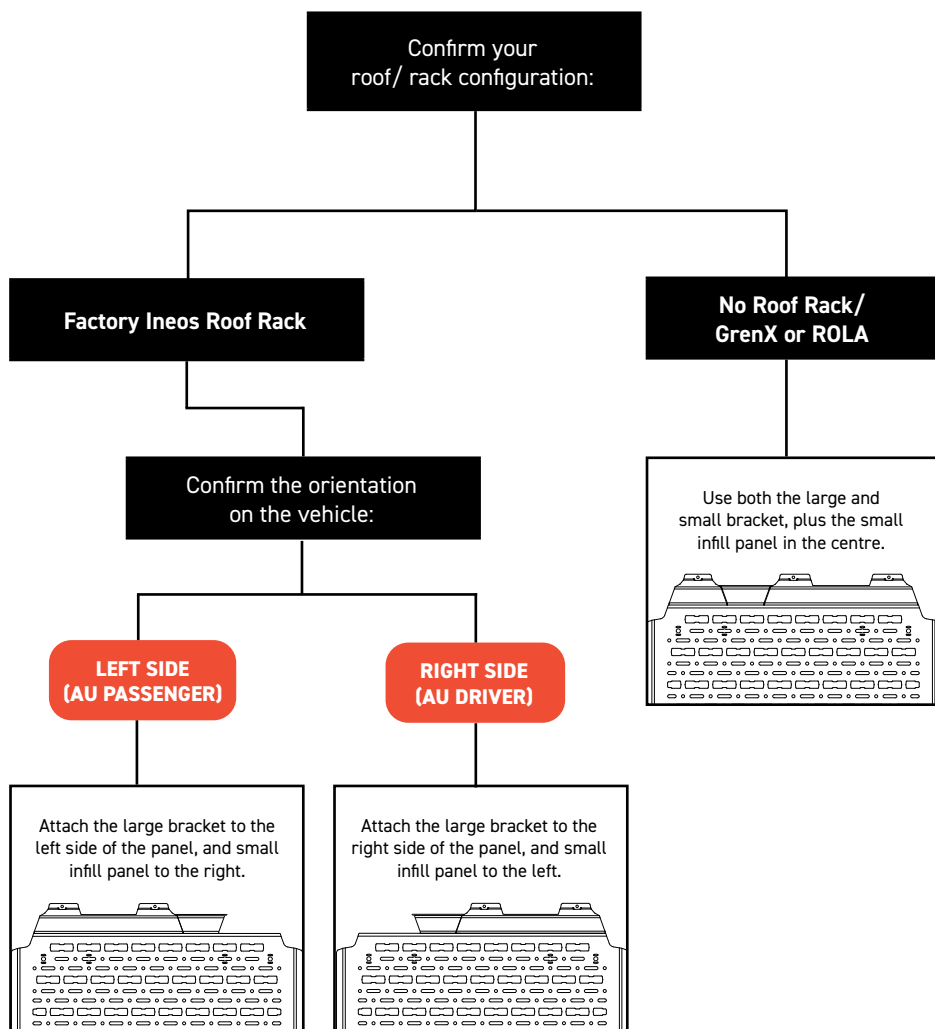
Demonstrated below is how to measure the distance from the outermost point on the vehicle. In this example, any accessories mounted on the exterior molle panels must not exceed beyond the red line.



What Configuration of Brackets You'll Need.

The Exterior Molle Panel was designed to work on both sides of your vehicle, and with a factory or non-factory roof rack. Due to this, the orientation and combination of top mounting brackets you use will depend on what kind of rack you are running, and the side of the vehicle you are mounting to.

Let's work out the best configuration for your set up, shall we?



G8.8 Bolt Torque (Non-Lubricated)

DIAMETER (mm)	5mm	6mm	8mm	10mm	12mm
NEWTON-METRES (Nm)	6 Nm	10 Nm	15 Nm	22 Nm	35 Nm

Let's get to work.

Assembling the Panels

1. First things first – you'll want to figure out the configuration of brackets to best suit the side of the vehicle you're mounting to, and your roof rack. **Refer to the spread on page 4** to determine which configuration will suit your needs.

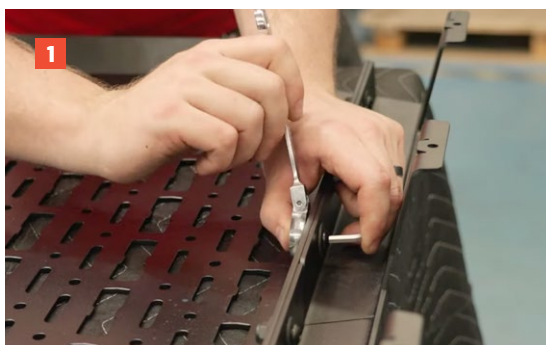
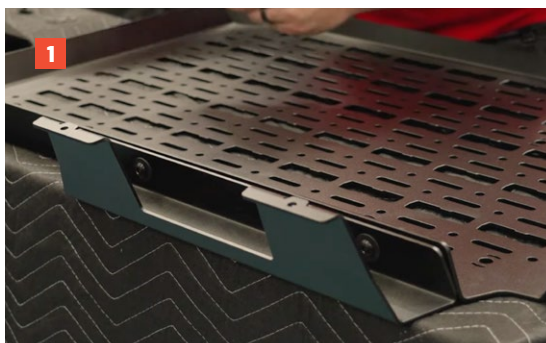
Attach the required top brackets to the main panel using the supplied M8 hardware, sandwiching the washer on both sides of the brackets. With the brackets and panel aligned, tighten all bolts.

2. It's easiest to secure any accessories to your Exterior Molle Panel first, as it will be more difficult once the panel is mounted to the vehicle.

If you're mounting something that has the potential to vibrate on the panel, for example a water tank, we recommended using the supplied rubber bumpers in the spare holes on the panel to create a buffer between the panel and accessory.

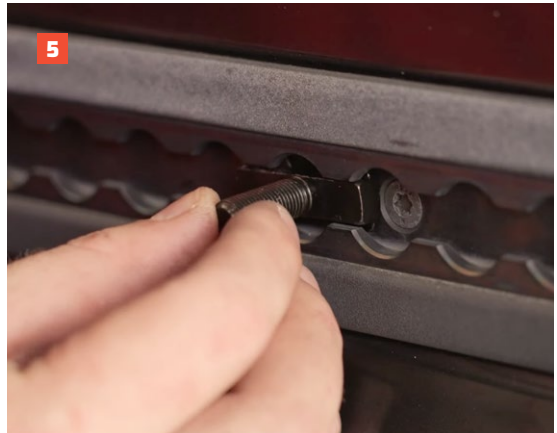
Complete a test fit with your accessories and hold the panel against the vehicle to determine the best configuration for your setup. You'll want to ensure you retain clearance to the passenger and rear doors.

3. With your accessory configuration confirmed, tighten all the hardware.



Installation

4. Remove the factory bolts in the positions that you will be mounting to below the grab rail but above the window, using a T30 Torx wrench.
5. Slide the supplied two L Track studs into their rough mounting positions on the L Track. Ensure that the L Track stud sits exactly half way between the opening on either side, so that it does not fall out.
6. Use the supplied Locator to loosely lock the L Track stud in place.



Installation

7. Place the assembled External Molle Panel in position against the vehicle, and loosely attach at the top using the supplied M6 bolts and washers.
8. On the L Track, ensure that the Locator over each L Track Stud is fully seated, and attach the External Molle Panel using the M10 Nyloc Nut.
9. With all bolts loosely secured, we recommend fully equipping the panels with their intended load to ensure correct weight distribution during torquing.

Starting with the lower mounts and then following with the top mounts, tighten all the hardware to the recommended torque settings.

10. That's it, you're done!





Local Knowledge & Assistance

We know half the fun of building your dream 4x4 is getting your hands dirty. But we also know that sometimes, things don't go to plan. If in the pursuit to build the ultimate setup you find yourself off-track, we're here to help you get unstuck.

For further information call 07 3180 1470 or email info@kaon.com.au

Disclaimer: The products sold by KAON should not be modified, and are for use only on the vehicles specifically stated. KAON will not be liable for any damages arising out of the use or misuse of its products. It is the customers responsibility to ensure the products are safely and properly used and installed. KAON consistently seeks to improve its products and reserves the right to make changes to any product.