



FITTING INSTRUCTIONS FOR

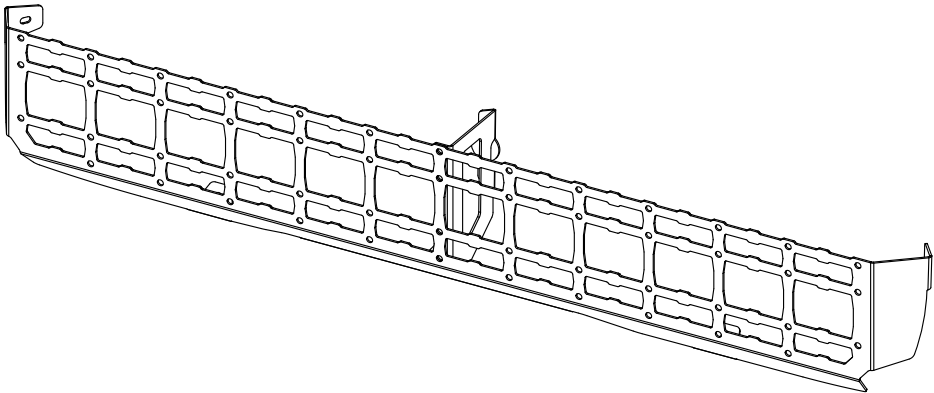
# Rear Window Basket

SKU


**KS0928**

COMPATIBILITY

**Suzuki Jimny JB74, JC74**



## Included contents

QTY	COMPONENT	QTY	COMPONENT
1	Rear Window Basket	1	M5 Nutsert Tool
1	Rear Window Divider	5	M5 Nutsert
1	Suction Cup 85mm	5	M5 x16 Button Head Cap Screw
1	M8 Flanged Nut	5	M5 x 16 x 1.0 DIN Washer
2	M6 x 12 Button Head Socket Screw	 <b>Time</b> 45 minutes / Most of a beer	
2	M6 Flanged Nut		

Scan the **QR code** to watch the video installation guide,  
or for further information contact KAON on **07 3180 1470** or [info@kaon.com.au](mailto:info@kaon.com.au)



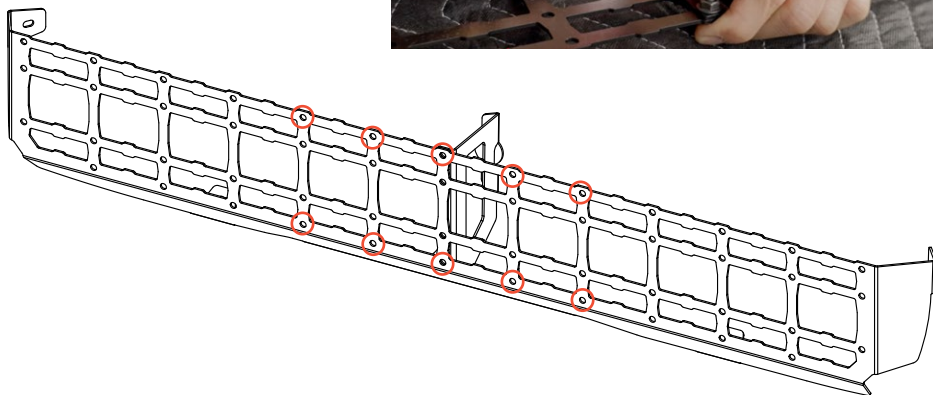
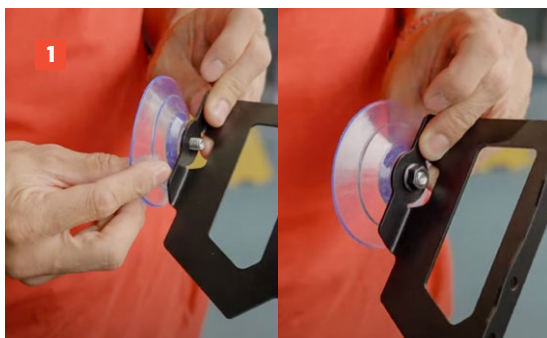
## G8.8 Bolt Torque (Non-Lubricated)

DIAMETER (mm)	5mm	6mm	8mm	10mm	12mm
NEWTON-METRES (Nm)	6 Nm	10 Nm	15 Nm	22 Nm	35 Nm

# Let's get to work.

## Preparation

1. Let's start with assembling the components first. Attach the suction cup to the divider using the M8 flanged nut.
2. With the suction cup attached, attach the divider to the window basket using the M6 screws and nuts. The divider must be positioned in one of the five central hole positions pictured below, in order to support the basket correctly. Ensure that the more angled end is pointed toward the bottom of the basket.



## Installation cont.

3. We recommend applying masking tape to the door as protection during installation. To identify the placement of the tape, hold the basket in the window frame, using a piece of paper behind the suction cup to prevent it from sticking. Ensure the basket is correctly positioned, with all edges closely and evenly spaced to the window trim.
4. With the mounting point locations noted, adhere tape to the rear door in these areas.
5. Replace the basket, once again using a piece of paper to prevent the suction cup from sticking. Adjust the position as required.
6. With the position confirmed, slide the paper out and lightly press the suction cup onto the glass to hold the basket's position. Keep a slight bit of pressure on the basket so that it remains firmly in position.
7. Mark the position of each bolt hole.



## Installation cont.

8. With the mounting positions marked, we recommend using a centre punch on each marked point to make a guide for the drill to follow.
9. We recommend using a step drill bit to create an opening for the nutserts. Note and mark the 8mm step on the bit, and when drilling ensure that you only drill in as far as this mark. If you don't have a step drill bit, we recommend drilling a 3mm pilot hole before following with an 8mm bit.
10. Slowly drill an 8mm hole in each centre punched mounting position.
11. Before removing the masking tape, we recommend sealing the raw steel edges with a dab of paint.



## Installation cont.

12. Remove the masking tape around the window space.
13. If you have a nutsert gun, use it to install the nutserts. Otherwise, set up the nutsert on the provided nutsert tool using an allen key and a ring spanner, as pictured. Apply a small dab of grease to the threaded bolt on the nutsert tool, reapply as necessary.
14. Set the nutsert into the hole and tighten until you feel that it has clamped onto the vehicle.
15. Once set, remove the bolt and nut, leaving the nutsert in the rear door.
16. Repeat for the remaining holes.





## Installation cont.

17. Replace the basket, once again using a piece of paper to prevent the suction cup from sticking.
18. Loosely secure each mounting point with the provided M5 bolts and washers.
19. Push the basket toward the glass and tighten each screw until secure. Ensure that you don't over-tighten and strip the hole.
20. Remove the paper once again, and push the suction cup firmly into the glass.
21. You will notice that the rear door demister wires sit in the basket space. We recommend installing covers over these wires if you are planning to store items on top of them.
22. That's it – you're done! Now you've got a handy storage spot in your rear door for soft storage items like loo paper, towels etc. We'll leave the arranging up to you.







### **Local Knowledge & Assistance**

We know half the fun of building your dream 4x4 is getting your hands dirty. But we also know that sometimes, things don't go to plan. If in the pursuit to build the ultimate setup you find yourself off-track, we're here to help you get unstuck.

**For further information call 07 3180 1470 or email [info@kaon.com.au](mailto:info@kaon.com.au)**

Disclaimer: The products sold by KAON should not be modified, and are for use only on the vehicles specifically stated. KAON will not be liable for any damages arising out of the use or misuse of its products. It is the customers responsibility to ensure the products are safely and properly used and installed. KAON consistently seeks to improve its products and reserves the right to make changes to any product.