



FITTING INSTRUCTIONS FOR

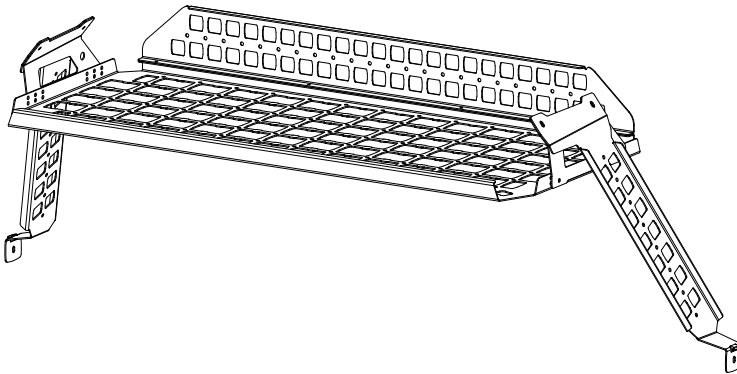
# Standalone Rear Roof Shelf

SKU

**KS0914/915**

COMPATIBILITY

**Toyota Prado 250, Lexus GX550**



## Included contents

QTY	COMPONENT
1	Standalone Shelf
1	Rear Fence
2	Handle Bracket (LHS & RHS)
4	M5 x 12 Flanged Hex Bolt G8.8
4	M5 Flanged Nut
4	M6 x 16 Flanged Hex Bolt G8.8
4	M6 Flanged Nut

## Small Side Molle Panel option

QTY	COMPONENT
2	Small Molle Panel
2	M6 x 50 Hex Bolt
2	M6 x 18 x 1.6 Flat Washer



**Time**

30 minutes / Half a beer

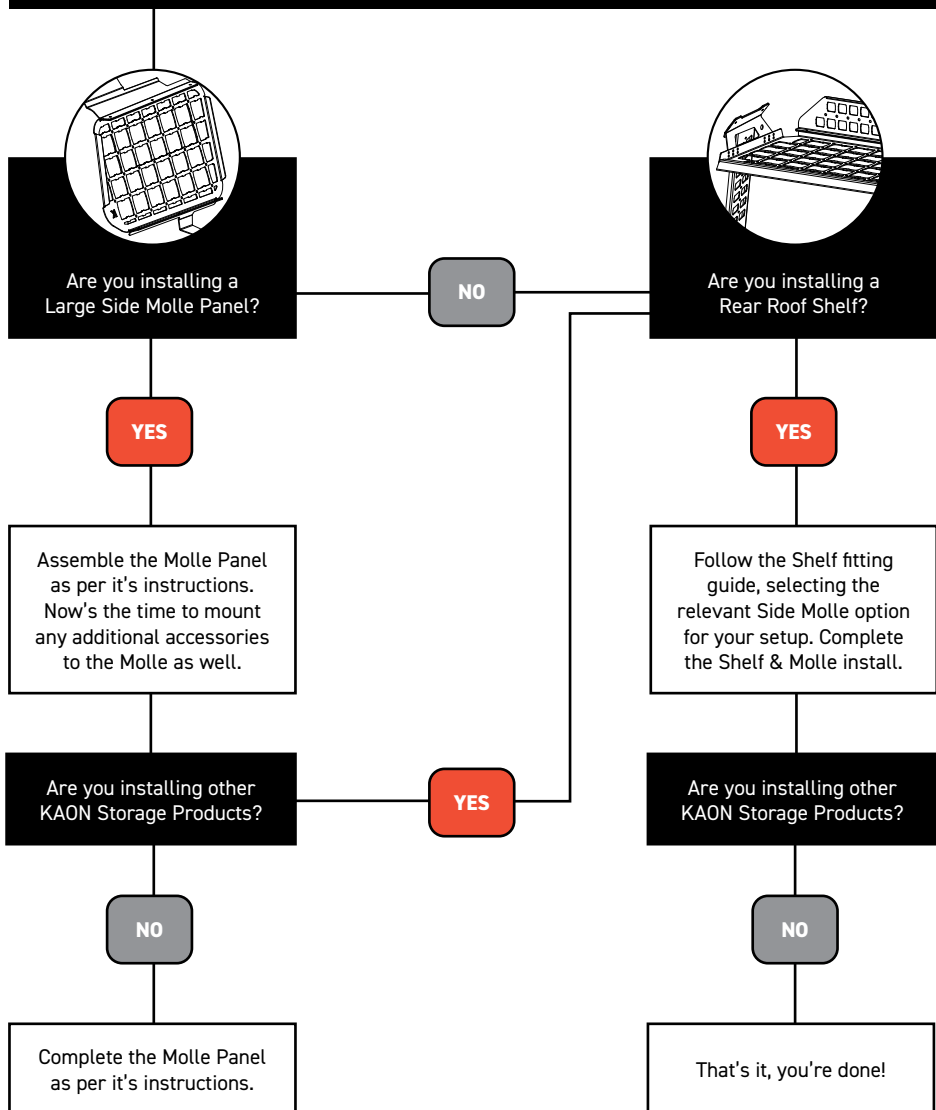
You also need **KS0915 Small Side Molle Panels** OR **KS0916 Large Side Molle Panels** (packaged separately).

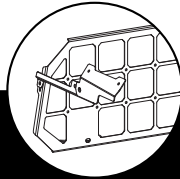
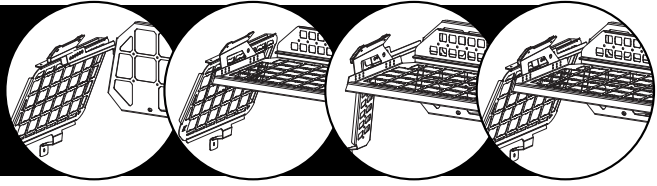
Scan the **QR code** to watch the video installation guide,  
or for further information contact KAON on **07 3180 1470** or [info@kaon.com.au](mailto:info@kaon.com.au)



# It all works together.

All our storage products work together, but there is a certain order to installing.  
Let's work out the best order for your setup, shall we?





Are you installing a  
Light Cargo Barrier?

NO

YES

The last piece of the  
puzzle, complete your  
install by following the  
Light Cargo Barrier  
fitting guide.

Are you installing other  
KAON Storage Products?

YES

NO

That's it, you're done!

YES

With the foundation  
in place, it's time to mount  
any other accessories,  
such as a Cargo Divider,  
Travel Buddy, etc. Have  
fun making it your own.

With your setup order sorted, let's get to the good part: installing. →

## G8.8 Bolt Torque (Non-Lubricated)

DIAMETER (mm)	5mm	6mm	8mm	10mm	12mm
NEWTON-METRES (Nm)	6 Nm	10 Nm	15 Nm	22 Nm	35 Nm

# Let's get to work.

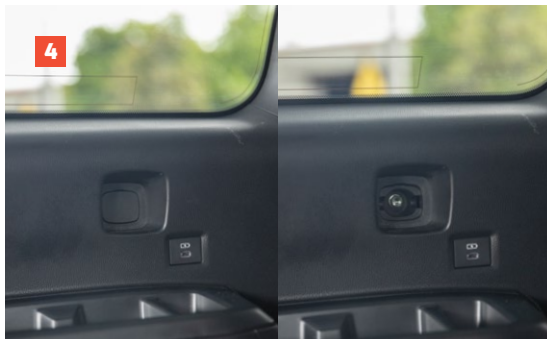
## Preparation

1. Depending on your Molle Panel configuration, you will need to follow the installation order established on Page 2 & 3 of these instructions.

**If you are installing the Large Molle Panels with your Standalone Shelf:**

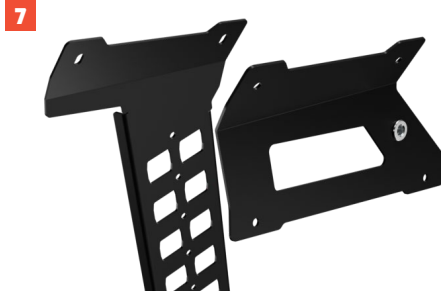
Follow the instructions provided with the Molle Panels, then skip to step 11 of these instructions.

2. Locate the rear grab handles in the vehicle, and remove the plastic covers with a small trim tool or screwdriver, exposing the bolts.
3. Using a socket with extension, unscrew the factory bolts and remove both rear grab handles. Set aside.
4. Next locate the lower mounting point below the window and remove the plastic cover to expose the bolt.
5. Unscrew and remove.



## Installing the Small Molle Panels

6. Ensure you have the correct panel and handle bracket for each side. The elongated section at the top of the Small Molle Panels should point towards the back of the vehicle.
7. Sandwich the Shelf Handle Bracket over the top of the Small Molle Panel as shown. The nutsert on the Shelf Handle Bracket should be pointing toward the front of the vehicle on each side.
8. With the brackets layered, thread through the factory rear grab handle bolts and re-install to the vehicle on each side.
9. Next, locate the lower mounting point and secure the Small Molle Panel using the supplied M6 Hex Bolt and Washer.
10. Apply some pressure to the Molle Panel, and adjust the positioning as required. While applying pressure, tighten all bolts.



---

## Assembling the Shelf

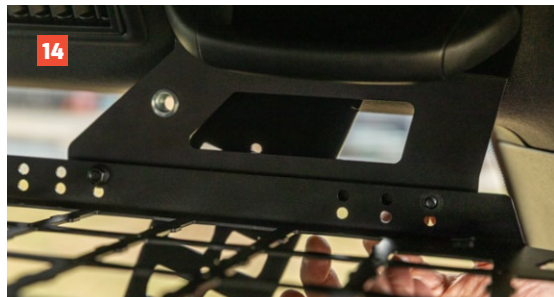
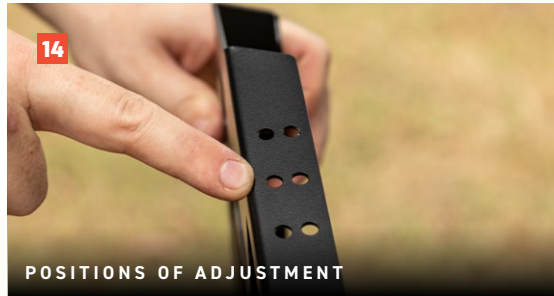
- 11. Attach the rear fence to the shelf using the M5 nuts and bolts.
- 12. Tighten to secure.



---

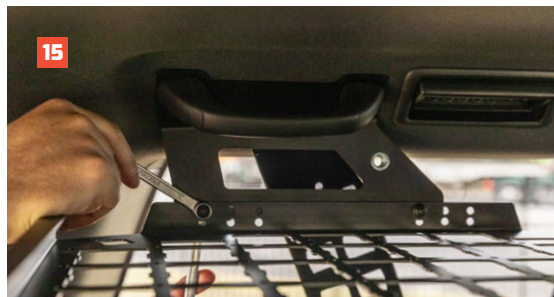
## Installing the Shelf

- 13. With all the panels and brackets up, it's time to install the shelf itself. Whilst this can be done on your own, you may find it easier to ask a mate for help.
- 14. Use the M6 bolts and nuts to install the shelf to the bracket. There are a couple of positions for adjustment in your shelf positioning.
- 15. With the shelf position confirmed, tighten all the bolts.
- 16. That's it! Your new shelf is able to hold a recommended maximum load of 10kg. It also has some handy twin bottle openers on each side.



### **If you're adding a Light Cargo Barrier:**

- 17. Follow steps 6-13 in the Light Cargo Barrier instructions to assemble and install.





## NOTICE

We cannot confirm compatible fitment of this shelf with child restraints, due to the number of possible variations. Whilst it may work with your configuration, we recommend the use of a seat belt protector where any contact occurs between any seat belt or restraint and the shelf.



### Local Knowledge & Assistance

We know half the fun of building your dream 4x4 is getting your hands dirty. But we also know that sometimes, things don't go to plan. If in the pursuit to build the ultimate setup you find yourself off-track, we're here to help you get unstuck.

For further information call 07 3180 1470 or email [info@kaon.com.au](mailto:info@kaon.com.au)

Disclaimer: The products sold by KAON should not be modified, and are for use only on the vehicles specifically stated. KAON will not be liable for any damages arising out of the use or misuse of its products. It is the customers responsibility to ensure the products are safely and properly used and installed. KAON consistently seeks to improve its products and reserves the right to make changes to any product.





FITTING INSTRUCTIONS FOR

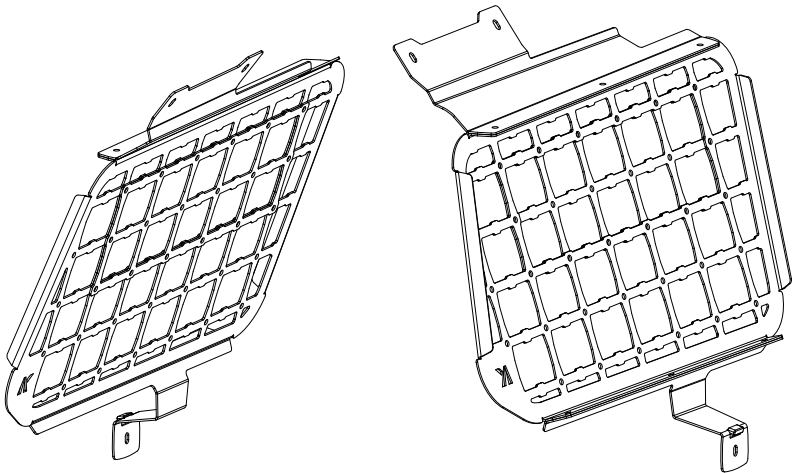
# Large Side Molle Panels

SKU

**KS0916**

COMPATIBILITY

**Toyota Prado 250, Lexus GX550**



## Included contents

QTY	COMPONENT	QTY	COMPONENT
2	Large Side Molle Panel	2	M6 x 50 Hex Bolt G8.8
2	Lower Mounting Bracket (LHS & RHS)	2	M6 x 18 x 1.6 Washer
2	Upper Mounting Bracket (LHS & RHS)	28	M6 x 12 Button Head Socket Screw
2	Infill Panel	28	M6 Flat Flanged Nut



**Time**

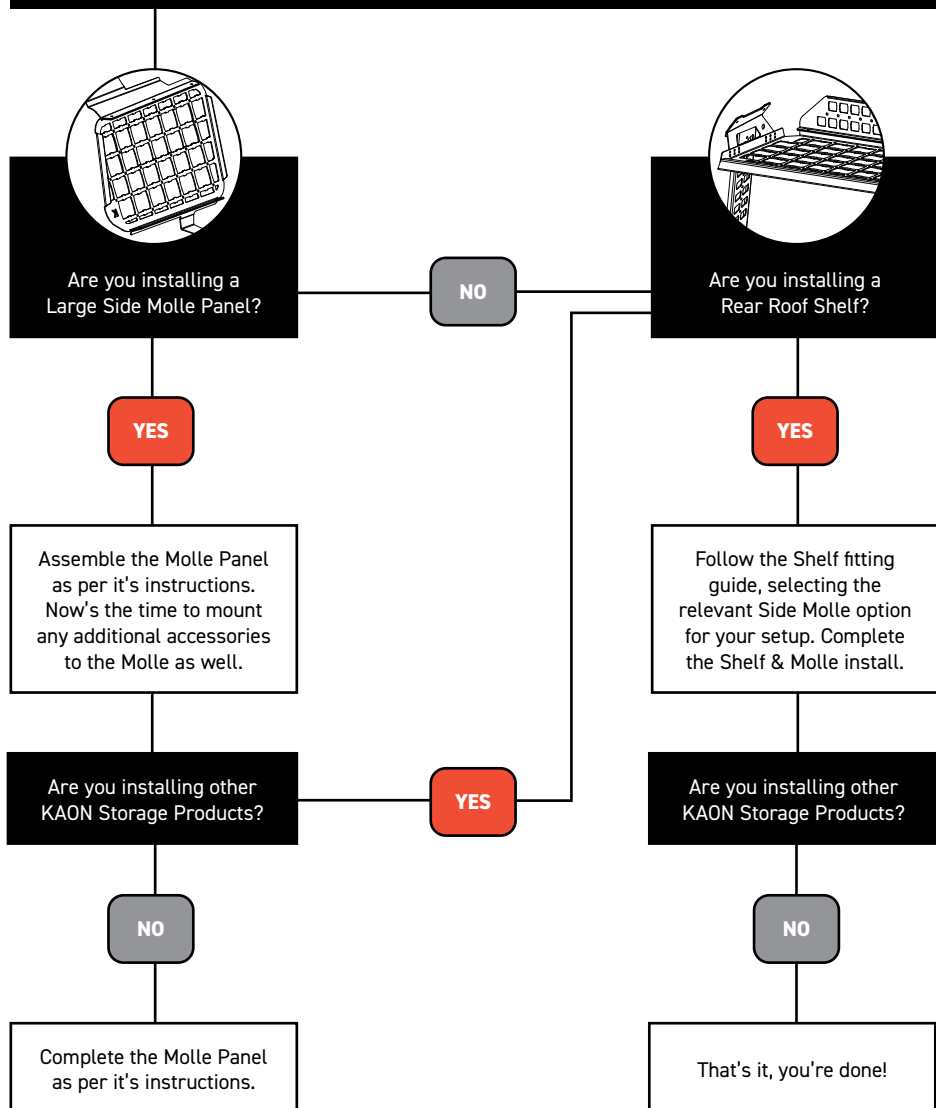
30 minutes / Half a beer

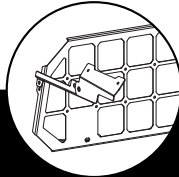
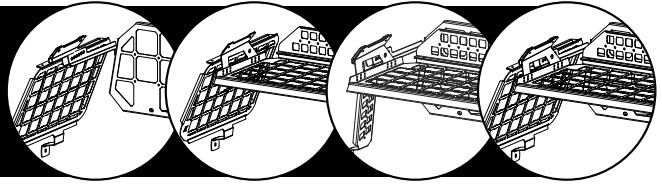
Scan the **QR code** to watch the video installation guide,  
or for further information contact KAON on **07 3180 1470** or **info@kaon.com.au**



# It all works together.

All our storage products work together, but there is a certain order to installing.  
Let's work out the best order for your setup, shall we?





Are you installing a  
Light Cargo Barrier?

NO

YES

The last piece of the  
puzzle, complete your  
install by following the  
Light Cargo Barrier  
fitting guide.

Are you installing other  
KAON Storage Products?

YES

NO

That's it, you're done!

YES

With the foundation in  
place, it's time to mount  
any other accessories,  
such as a Cargo Divider,  
Travel Buddy, etc. Have  
fun making it your own.

With your setup order sorted, let's get to the good part: installing. →

## G8.8 Bolt Torque (Non-Lubricated)

DIAMETER (mm)	5mm	6mm	8mm	10mm	12mm
NEWTON-METRES (Nm)	6 Nm	10 Nm	15 Nm	22 Nm	35 Nm

# Let's get to work.

## Assembling the Panels

1. First, identify the correct lower and upper mount bracket for each panel. Each bracket should be attached to the Molle Panels in the orientation pictured. When installed, the K logo will be facing toward the back of the vehicle on both the left and right side.
2. Secure the lower mount bracket to the Molle Panel using the provided M6 hardware. The dome head of the bolt should sit on the lower mount bracket side and the nyloc nut on the molle panel side, as pictured.
3. Next, secure the top bracket to the Molle Panel using the M6 hardware.
4. Tighten all the M6 hardware until secure, and repeat for the other Molle Panel.

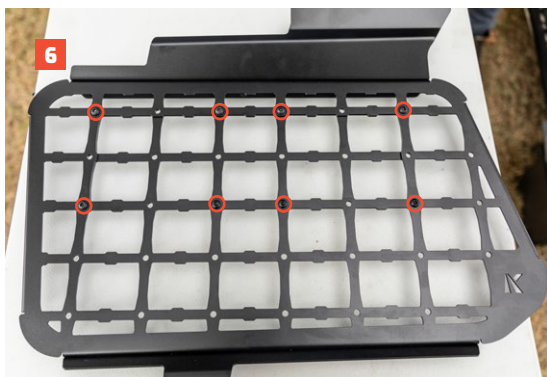
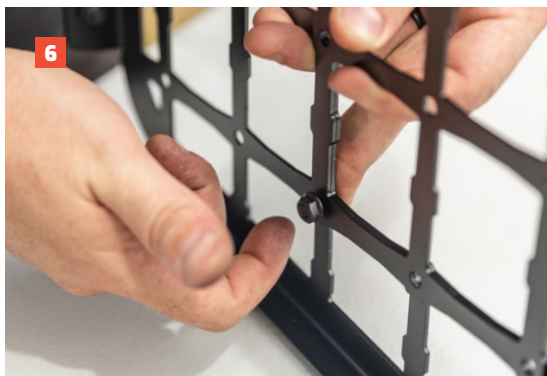


---

## Optional – Installing the Infill Panels

5. Now is the easiest time to decide if you would like to install the infill sections. When fitted, they allow for the full Molle Panel to be used as a mounting surface. Store them away if you would prefer to utilise the window cavity behind the panels as additional storage, for soft items only. These panels can be installed or removed at a later stage if you change your mind
6. If using the Side Molle Panels as a complete mounting surface, attach the infill panel to the Molle Panel using the provided M6 Hardware. The dome heads should be facing the front of the panel and the nut facing toward the back.

**Please note:** You can secure this panel to the Molle using only 6 M6 bolts, however for maximum strength we recommend using all 8 in each panel in the mounting positions pictured.



---

## Preparing the Vehicle

7. Locate the rear grab handles in the vehicle, and remove the plastic covers with a small trim tool or screwdriver, exposing the bolts.
8. Using a socket with extension, unscrew the factory bolts and remove both rear grab handles. Set aside.
9. Next locate the lower mounting point below the window and with a trim tool, remove the plastic cover to expose the bolt.
10. Unscrew and remove.



## Installing the Molle Panels

11. Starting with the upper mounting bracket on the assembled Molle, layer the factory rear grab handle on top and loosely re-install to the vehicle, as pictured. Ensure you have the correct panel for each side, with the 'K' positioned at the back of the vehicle.

**If you're installing with a Standalone Shelf and/or**

**Cargo Barrier:** their handle brackets should be sandwiched over the upper Molle Panels mount at this stage.

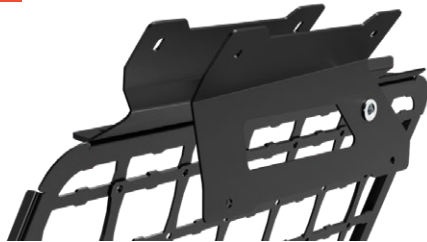
**If you are installing both the Shelf and Barrier:** use the Shelf Handle Bracket and set the Barrier Handle Bracket aside.

Ensure the nutsert on the handle brackets is pointing towards the front of the vehicle, as pictured.

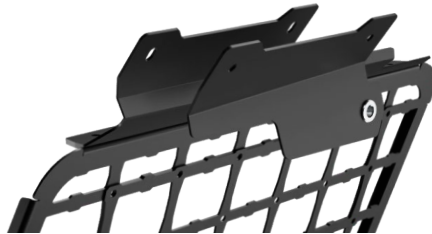
12. Next, secure the Molle Panel's lower mounting bracket loosely at the base mounting point using the provided M6 Hex Bolt and washer.



11 BRACKET LAYERING WITH STANDALONE SHELF



11 BRACKET LAYERING WITH CARGO BARRIER ONLY

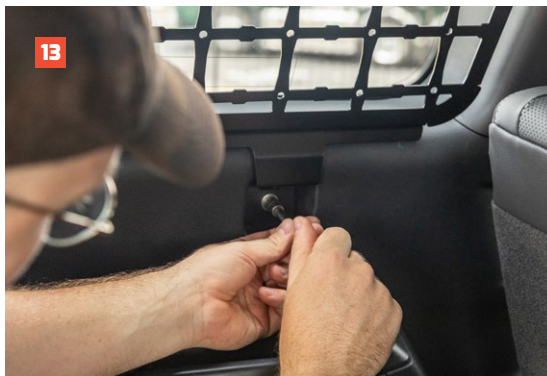


---

## Installing the Molle Panels cont.

13. Applying some pressure to the Molle Panel, and make any necessary adjustments to the position. While still applying pressure to the panel, tighten all bolts.
14. Clip the factory bolt covers back into place on the rear grab handles.
15. That's it – you're done!

If you are installing a Standalone Shelf or Light Cargo Barrier with your panels, continue with the instructions in their fitting guides.





### **Local Knowledge & Assistance**

We know half the fun of building your dream 4x4 is getting your hands dirty. But we also know that sometimes, things don't go to plan. If in the pursuit to build the ultimate setup you find yourself off-track, we're here to help you get unstuck.

**For further information call 07 3180 1470 or email [info@kaon.com.au](mailto:info@kaon.com.au)**

Disclaimer: The products sold by KAON should not be modified, and are for use only on the vehicles specifically stated. KAON will not be liable for any damages arising out of the use or misuse of its products. It is the customers responsibility to ensure the products are safely and properly used and installed. KAON consistently seeks to improve its products and reserves the right to make changes to any product.