



FITTING INSTRUCTIONS FOR

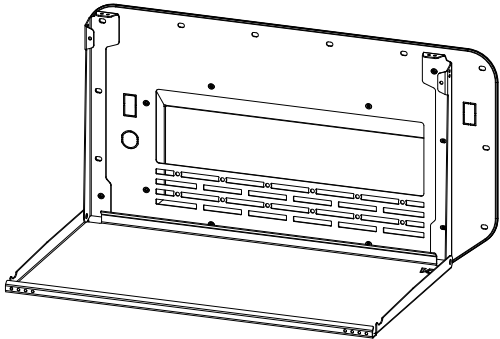
Rear Door Table & Door Card

SKU

KS0873

COMPATIBILITY

Ineos Grenadier Wagon Models



Included contents

QTY	COMPONENT	QTY	COMPONENT
1	Rear Door Table	2	Black Paracord
2	Rear Door Table Bracket (LHS & RHS)	2	M8 x 16 Button Head Cap Screw
1	Rear Door Pocket	2	M8 Nyloc Nut
1	Rear Door Card Replacement	2	M8 x 16 x 1.5 Washer
2	Bungee Button	2	M5 x 16 Button Head Cap Screw
15	M6 x 18 x 1.5 Flat Washer	2	M5 Nyloc Nut
5	M6 x 7.5 Spacer	10	M5 x 6 Button Head Cap Screw
5	M6 x 25 Button Head Cap Screw	10	M5 x 16 x 1.0 DIN Washer



Time

45 minutes / Most of a beer

For further information contact KAON on **07 3180 1470** or info@kaon.com.au

G8.8 Bolt Torque (Non-Lubricated)

DIAMETER (mm)	5mm	6mm	8mm	10mm	12mm
NEWTON-METRES (Nm)	6 Nm	10 Nm	15 Nm	22 Nm	35 Nm

Let's get to work.

Preparation

1. Remove the factory door card, and place the bolts aside to be re-used during the installation of the rear door table.

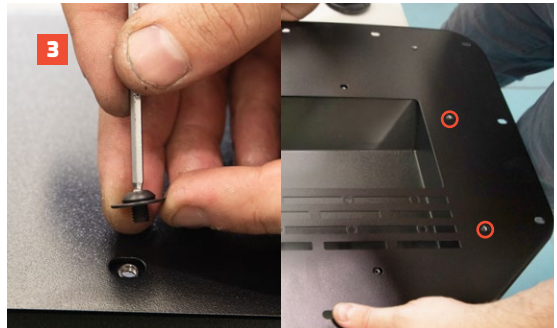
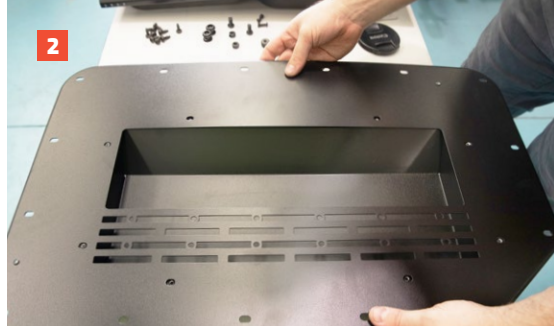


Assembling the Replacement Door Card

2. Align the bolts holes of the rear door pocket with the rear door replacement card, as pictured. Make sure that the rolled edge of the door card is facing toward the pocket.
3. Using the supplied M5 x 6 Screws and M5 x 16 x 1.0 Washers, loosely attach the pocket to the door card, except for the two right-hand side bolts circled. These will be attached later, so leave them blank. Take care not to cross thread the bolts.
4. You will notice that the replacement door card has cut outs to run switches and electrical components. If you are planning to install electrical components, now is the time to get them installed – otherwise continue on to step 8.

Use clippers to cut the joints on the openings you'll be using.

5. Pry out the metal centre and file down the clipped pieces.
6. Insert your desired electrical component through the front of the door card.
7. Now is the time to connect and run the cabling in the rear door cavity. We'll leave that part up to you.



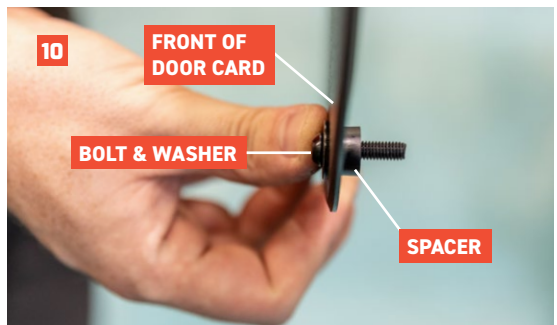
Installing the Door Card

8. Place the replacement rear door card in position in the cavity.
9. Locate the bolt positions at the top right and top second from the left. Secure the card to the door's captive mounts in these two positions, reusing the factory bolts with an M6 x 18 Washer. Leave the remaining bolt holes for now.
10. Now it's time to secure the replacement door card at the bottom. To ensure the card sits square, we will install a spacer behind the door card's bottom bolts.

Starting from the bottom right, slide one of the supplied spacers behind the bolt opening. Then thread an M6 x 25 Bolt with an M6 x 18 Washer through the door card into the spacer behind.

When installed correctly, the spacer will sit in the orientation pictured in the rear door space. The bolt and washer will secure through the front and into the spacer in the rear door.

11. Repeat the previous step for all the remaining bottom-row bolt openings on the door card.



Installing the Door Card cont.

12. Attach the LHS table bracket to the door card using the factory bolts in the top three bolt holes with the supplied M6 x 18 Washers, as pictured. The bottom mounting location will use a supplied M5 x 6 Screw and M5 x 16 x 1.0 Washer.
13. Before attaching the RHS table bracket, loosely secure the remaining bolt openings along the top row and the right edge of the door card, using the factory bolts and supplied M6 x 18 Washers.
14. Attach the right hand side table bracket to the door card using the supplied M5 x 6 Screws and M5 x 16 x 1.0 Washers used to attach the rear door pocket.
15. Starting from the left hand side of the door card and working over to the right, tighten up all the bolts except those holding the right hand bracket in place. This will ensure that the components sits flush to the door without any warping of the door card.

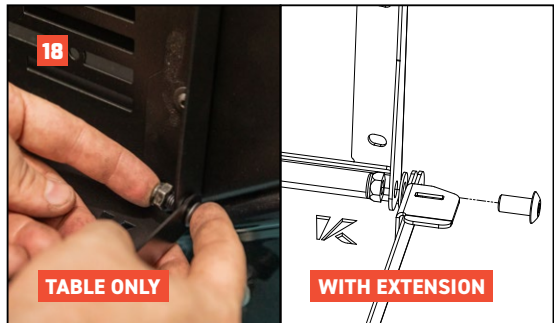
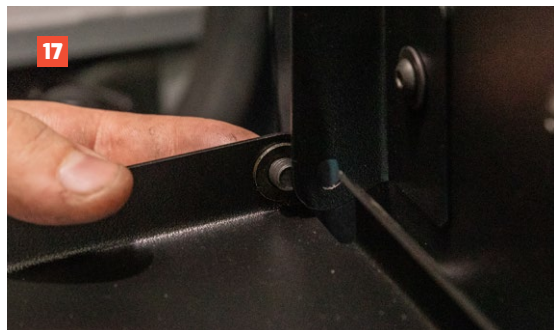


Installing the Rear Door Table

16. Place the M5 Button Head Screw through the front of each bungee button, and secure to the front of the table with the washer nyloc nut.
17. Attach the table to the LHS bracket using the M8 Button Head Screw and M8 Round Washer and tighten with the M8 Nyloc Nut. Ensure the table sits on the outside of the bracket and the washer is between the table and the bracket.
18. Repeat the process for the RHS table bracket.

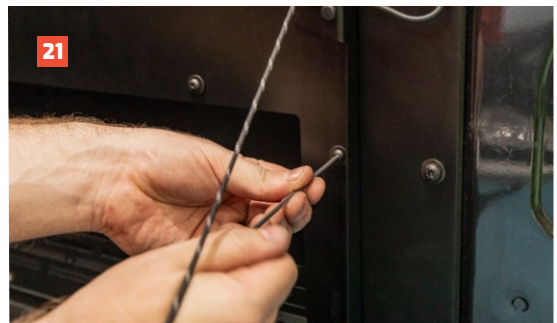
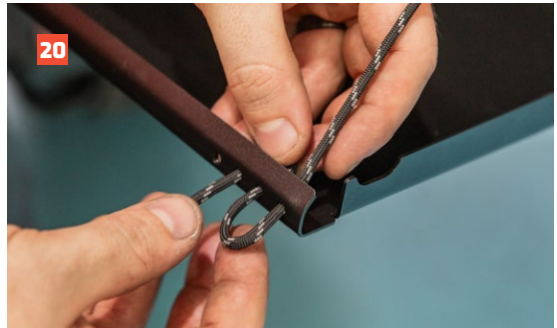
If you are also installing the Kitchenette Clip-In Sink Extension:

Sandwich the supplied tab bracket between the washer and table on the RHS. Position the tab bracket so the holes line up and the tab bracket hangs over the right-hand side of the table, as pictured.



Installing the Rear Door Table cont.

19. To attach the support line at the tops of the brackets, weave the cord through the holes and tie a basic knot to secure.
20. To attach the support line to the table, weave the cord through the openings on the table as shown. This allows the table level to be easily adjusted, while remaining secure. Repeat on other side.
21. With the support lines in place, confirm the positioning of both the table and table brackets, and tighten all bolts. The table hinge can be tightened to suit the desired friction.
22. That's it! We're all done – your new table is ready to go!





Local Knowledge & Assistance

We know half the fun of building your dream 4x4 is getting your hands dirty. But we also know that sometimes, things don't go to plan. If in the pursuit to build the ultimate setup you find yourself off-track, we're here to help you get unstuck.

For further information call 07 3180 1470 or email info@kaon.com.au

Disclaimer: The products sold by KAON should not be modified, and are for use only on the vehicles specifically stated. KAON will not be liable for any damages arising out of the use or misuse of its products. It is the customers responsibility to ensure the products are safely and properly used and installed. KAON consistently seeks to improve its products and reserves the right to make changes to any product.