



FITTING INSTRUCTIONS FOR

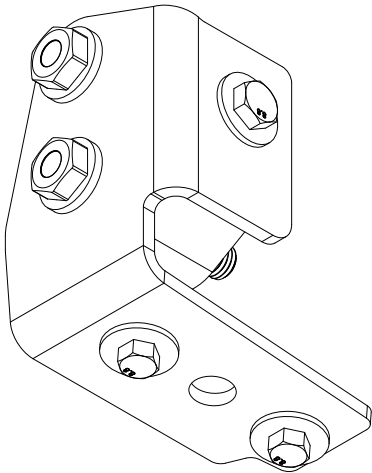
Panhard Corrector

SKU

KS0753

COMPATIBILITY

Toyota LandCruiser LC200



Included contents

QTY	COMPONENT	QTY	COMPONENT
1	Panhard Corrector Outer Bracket	2	M14 x 1.5 x 90mm Hex Bolt
1	Panhard Corrector Inner Bracket	2	M14 x 30 x 3.8mm Washer
1	M10 x 12mm Spacer	3	M10 x 1.25 x 35mm Hex Bolt
1	M14 x 5mm Spacer	3	M10 x 30 x 2.5 Flat Washer



Time

1 Hour / One Beer

Scan the **QR code** to watch the video installation guide,
or for further information contact KAON on **07 3180 1470** or **info@kaon.com.au**



G8.8 Bolt Torque						
DIAMETER (mm)	5mm	6mm	8mm	10mm	12mm	14mm
LUBRICATED (Nm)	5 Nm	8 Nm	16 Nm	33 Nm	56 Nm	84 Nm
NON-LUBRICATED (Nm)	6 Nm	10 Nm	22 Nm	44 Nm	77 Nm	112 Nm

Let's get to work.

Preparation

- 1. Before beginning installation of your Panhard Corrector, we recommend removing the Panhard rod for ease of install. At each end of the rod, remove the factory bolt securing it to the mount. Set these bolts aside. You can now lift the Panhard rod out, and set aside.
- 2. For Non-KDSS Vehicles:
Remove the 2 bolts on the underside of the Panhard Rod Mount, and the two bolts on the other side of the sway bar that connect it to the axle. Set this hardware aside and let the sway bar hang in place.

For KDSS Vehicles:

These captive threads are still present, but they will need to be examined to check for corrosion as they are open. We suggest running a tap through these threads if required.



Installation cont.

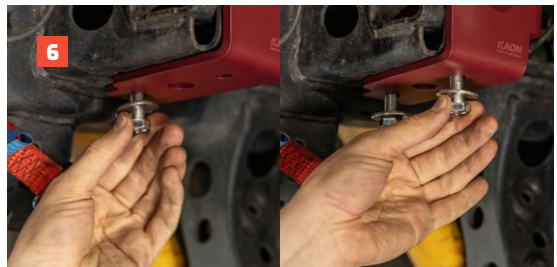
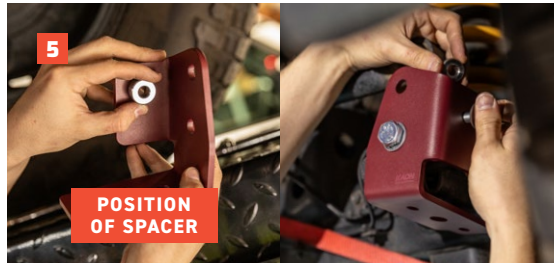
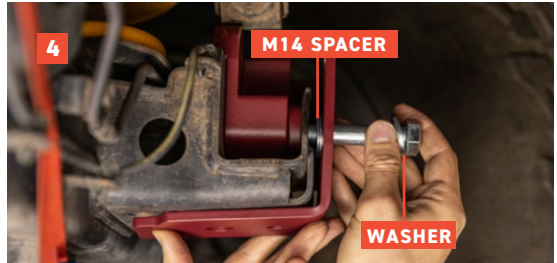
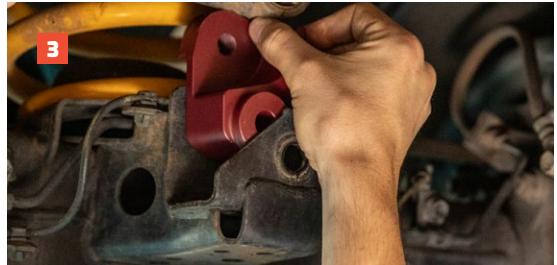
3. Place the inner bracket inside the factory Panhard mount in the orientation shown.
4. Place the folded outer bracket in position against the Panhard mount, and thread a supplied M14 bolt with washer through the centre, into the inner bracket. Ensure that you sandwich a washer on the outside and the supplied M14 spacer on the inside of the folded bracket, as pictured. Hand tighten the bolt.

Non-KDSS vehicles: the outer bracket needs to sit between the Panhard mount and sway bar.

5. The other spacer will now need to be placed between the side fold of the outer bracket and the inner bracket. Use a supplied M10 bolt and washer to secure its position by feeding it through the side hole on the folded bracket, whilst holding the spacer in place. The spacer will need to sit in the indicated position underneath the folded bracket.
6. Thread the supplied M10 bolts and washers through the bottom two openings on the folded bracket and into the Panhard mount.

For Non-KDSS Vehicles:
Reattach the other side of the sway bar using the factory hardware set aside earlier.

7. Loosely reattach the Panhard rod through the top opening using a supplied M14 bolt and washer.
8. You may now reattach the Panhard rod to the factory mount on the other side using the hardware set aside earlier. Tighten to the recommended torque settings.

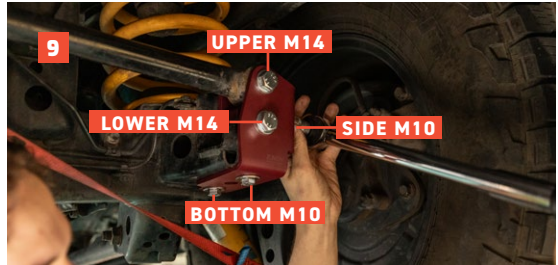


Installation cont.

9. With all the bolts now in position, torque to the recommended specs on the torque table on page 2. Use the following sequence to torque the bolts:

1. Side M10
2. Lower M14
3. Bottom M10
4. Upper M14

10. That's it - you're done!



Local Knowledge & Assistance

We know half the fun of building your dream 4x4 is getting your hands dirty. But we also know that sometimes, things don't go to plan. If in the pursuit to build the ultimate setup you find yourself off-track, we're here to help you get unstuck.

For further information call 07 3180 1470 or email info@kaon.com.au

Disclaimer: The products sold by KAON should not be modified, and are for use only on the vehicles specifically stated. KAON will not be liable for any damages arising out of the use or misuse of its products. It is the customers responsibility to ensure the products are safely and properly used and installed. KAON consistently seeks to improve its products and reserves the right to make changes to any product.