



FITTING INSTRUCTIONS FOR

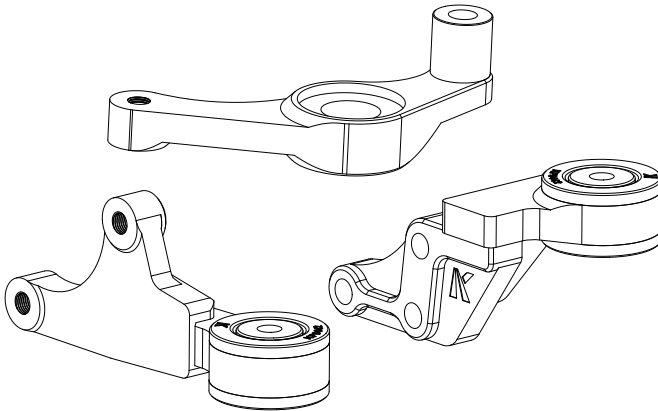
Front Arm Style Diff Drop

SKU

KS0752

COMPATIBILITY

Toyota LandCruiser LC200



Included contents

QTY	COMPONENT	QTY	COMPONENT
2	Arm Bracket (LHS & RHS)	1	Bump Stop Kit
1	Pinion Mount Bracket	2	M14 x 1.5 x 110 Hex Bolt
4	Rubber Bushing	1	M14 x 1.5 x 35 Hex Bolt
2	Bushing sleeve	1	M14 x 1.5 x 80 Hex Bolt
1	Lithium Grease Sachet	4	M14 x 28 x 1.5 Washer



Time

1.5 hours / A beer or two

Scan the **QR code** to watch the video installation guide,
or for further information contact KAON on **07 3180 1470** or info@kaon.com.au



G8.8 Bolt Torque

DIAMETER (mm)	5mm	6mm	8mm	10mm	12mm	14mm
LUBRICATED (Nm)	5 Nm	8 Nm	16 Nm	33 Nm	56 Nm	84 Nm
NON-LUBRICATED (Nm)	6 Nm	10 Nm	22 Nm	44 Nm	77 Nm	112 Nm

Let's get to work.

Preparation

1. Remove any underbody protection and ensure all surfaces are clean and free of debris/ rust.
2. Use a jack to prop up the diff and provide support during the installation process.
3. Remove the front bolts and washers connecting the diff arms to the cross member, and set aside.
4. Remove the bolts securing the factory pinion mount and set them aside.
5. Carefully lift the diff and slide out the pinion mount. Set aside.

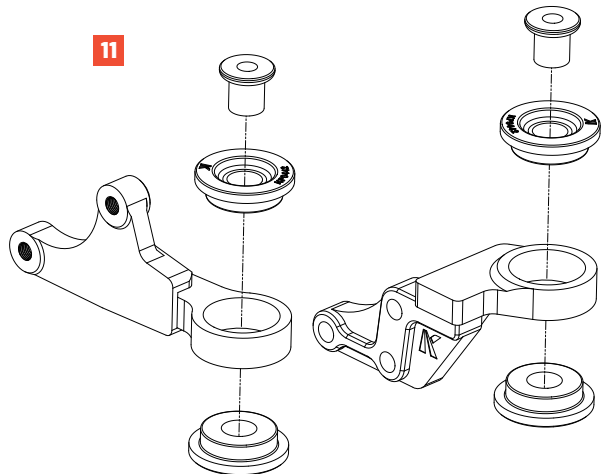
Please note: Inspect the interior components of this mount. Since we will be reusing these parts, if there is surface rust present, remove this with a wire brush or wheel. If your vehicle has more significant rust, we recommend replacing these components with genuine Toyota parts before proceeding with the Diff Drop installation.

6. Remove the remaining bolts connecting the diff arms to the diff. Set the bolts aside.
7. Remove both diff arms.



Preparing the Diff Arm Brackets

8. Cut a corner of the grease packet open and apply grease to the inside edge of the rubber bushing.
9. Push the rubber bush firmly into the Diff Drop Arm. Grease a second rubber bushing and push into the underside.
10. Repeat this process with the second Diff Drop Arm.
11. Apply the grease to the outside of the steel bushing sleeve. Push them firmly into the tops of the rubber bushings, as pictured.
12. Wipe off any excess grease.



Preparing the Pinion Mount

13. Remove the central components in the factory pinion mount, as they will now be reused in the replacement bracket.
14. Apply grease to the centre and outer edge of the factory rubber bushing.
15. Push one bushing in place on each side of the replacement pinion mount bracket.
16. Use the factory sleeves to sandwich the bushings on both sides of the pinion mount.
17. Wipe off any excess grease.



Installing the Diff Drop

18. Starting with the right arm bracket, replace the factory mounting bolts that connect the arm to the diff. Once done, torque these bolts to the recommended settings as per the table provided in these instructions as they will not be accessible later.
19. Align the pinion mount bolt hole with the mounting position on the diff and thread through the factory bolt. You may need to slightly lift the diff on one side to align everything and avoid cross threading the bolt.
20. Secure the additional two pinion mounting points with the provided M14 x 35 and M14 x 80 bolts, and washers.
21. Finally, with the left arm bracket replace the factory mounting bolts connecting the arm to the diff. Start with the most rearward and work forwards, only securing until hand tight.
22. Now you can replace the remaining front bolt and washer that connects the Diff arms to the chassis, using the longest supplied M14 x 110 bolts, and washers.
23. Tighten all the bolts, and ensure there are no gaps.

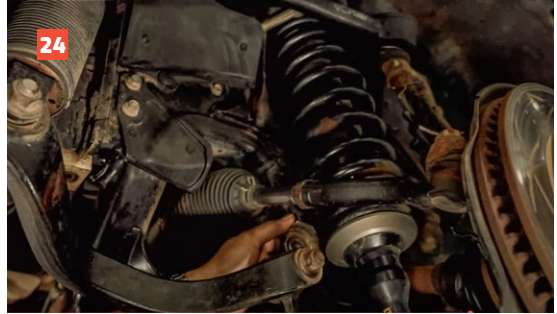


Installing the extended Bump Stops

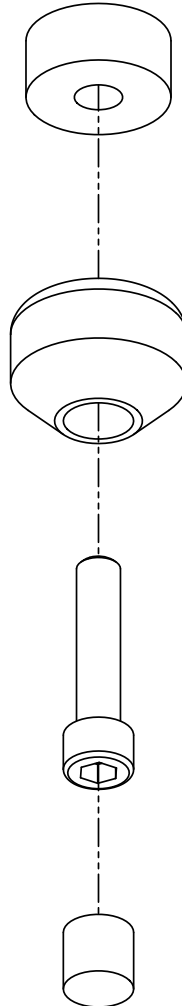
- 24. Uninstall all four of the factory front bump stops. A large shifter, or pipe wrench, may be required due to limited access in the wheel base.
- 25. Replace with the supplied extended bump stops.

Feed the bolt supplied in the bump stop kit through the centre of the stop and spacer, then fasten this to the factory mounting point. Tighten the bolt, then insert the cover bung over the bolt head to finish the bump stop.

- 26. Repeat for all the remaining bump stops.

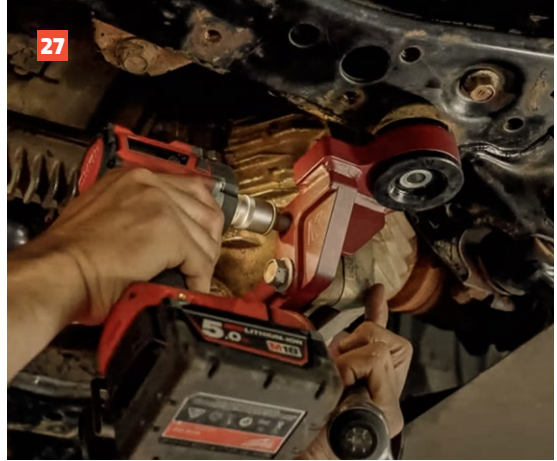


25



Finishing the Install

27. With all the components installed, it's time to torque all of the bolts. Torque to the recommended settings provided in the table of these instructions, to ensure the arm style diff drop is securely mounted.
28. That's it — you're done! We recommend checking that the bolts remain tight after a few hundred kilometres, and then during routine servicing and maintenance after that.





Local Knowledge & Assistance

We know half the fun of building your dream 4x4 is getting your hands dirty. But we also know that sometimes, things don't go to plan. If in the pursuit to build the ultimate setup you find yourself off-track, we're here to help you get unstuck.

For further information call 07 3180 1470 or email info@kaon.com.au

Disclaimer: The products sold by KAON should not be modified, and are for use only on the vehicles specifically stated. KAON will not be liable for any damages arising out of the use or misuse of its products. It is the customers responsibility to ensure the products are safely and properly used and installed. KAON consistently seeks to improve its products and reserves the right to make changes to any product.