



FITTING INSTRUCTIONS FOR

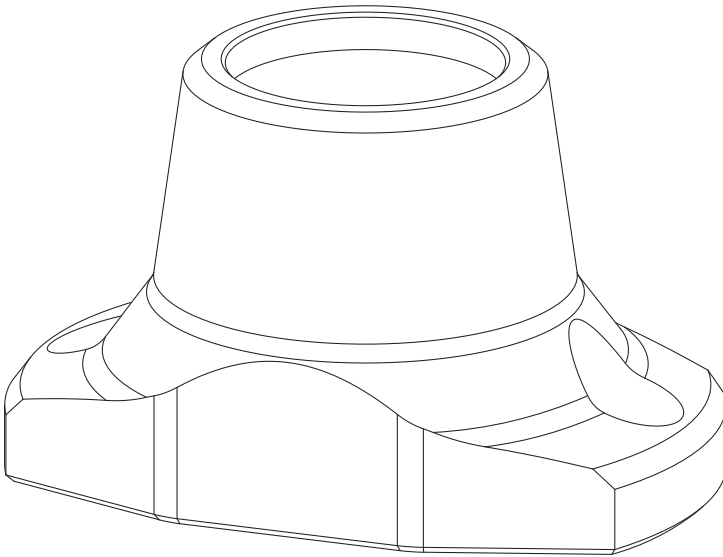
Starport Starlink Surface Mount

SKU

KS0724

COMPATIBILITY

***Rhino-Rack Pioneer, Rola Titan,
Cross Bars, Thule Caprock***



Included contents

QTY	COMPONENT
1	Starlink Surface Mount
2	M8 Drop and Turn Slot Nut
2	M8 x 20 Socket Head Cap Screw



Time

5 minutes / A sip of beer!

For further information contact KAON on **07 3180 1470** or **info@kaon.com.au**

Bolt Torque					
DIAMETER (mm)	5mm	6mm	8mm	10mm	12mm
NEWTON-METRES (Nm)	5 Nm	9 Nm	22 Nm	44 Nm	77 Nm

Let's get to work.

Installation

- 1. Decide on a desired location.
- 2. Note that the orientation of the logo on the supplied part will align with the Starlink release button. For this reason, it's recommended the logo side faces outwards or is otherwise easily accessible.



Installation cont.

3. Place the supplied channel nuts into the desired slot and move roughly into position.
4. Pass the supplied bolt through the bracket into the channel nuts and loosely fasten.
5. Insert your Starlink into the Starport bracket to verify that it fits and doesn't foul on other accessories or items. Once this has been verified, tighten the bolts fully.
6. That's it, you're done! You can now enjoy easy setup for your Starlink, in an elevated and secure spot.



NOTICE

This mount is only designed for use whilst the vehicle is stationary. Please ensure the Starlink dish is removed while the vehicle is in transit.



Local Knowledge & Assistance

We know half the fun of building your dream 4x4 is getting your hands dirty. But we also know that sometimes, things don't go to plan. If in the pursuit to build the ultimate setup you find yourself off-track, we're here to help you get unstuck.

For further information call 07 3180 1470 or email info@kaon.com.au

Disclaimer: The products sold by KAON should not be modified, and are for use only on the vehicles specifically stated. KAON will not be liable for any damages arising out of the use or misuse of its products. It is the customers responsibility to ensure the products are safely and properly used and installed. KAON consistently seeks to improve its products and reserves the right to make changes to any product.