



FITTING INSTRUCTIONS FOR

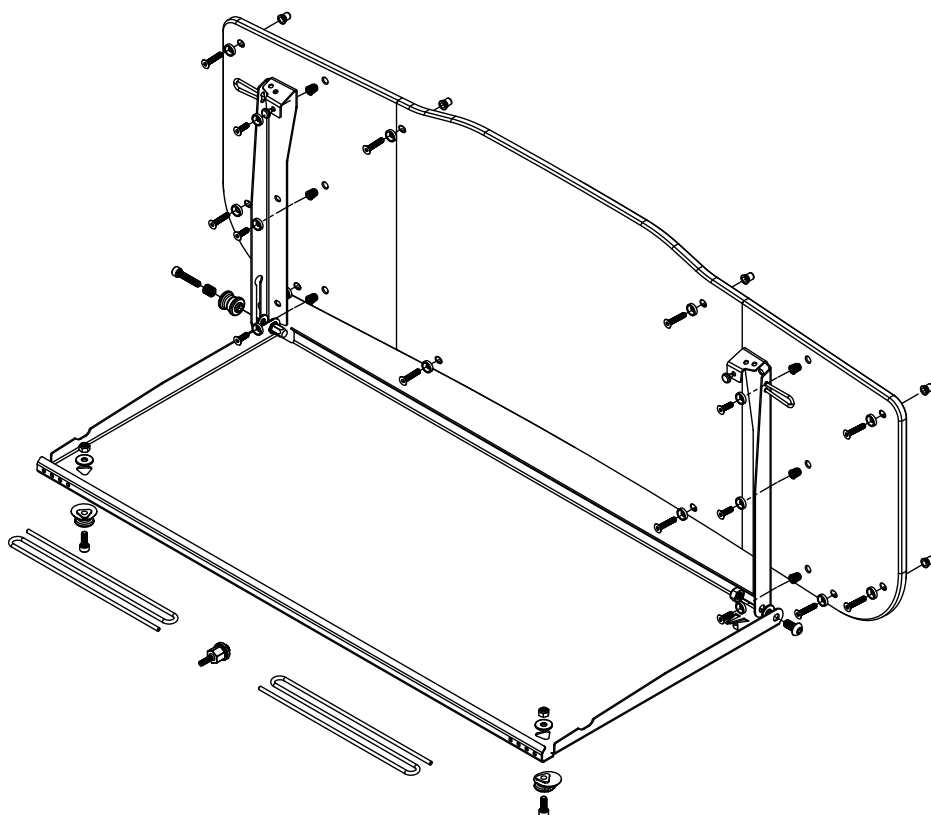
# Rear Door Table & Card

SKU

**KS0594**

COMPATIBILITY

***Suzuki Jimny JB74***



Scan the **QR code** to watch the video installation guide,  
or for further information contact KAON on **07 3180 1470** or **info@kaon.com.au**




# Included contents.

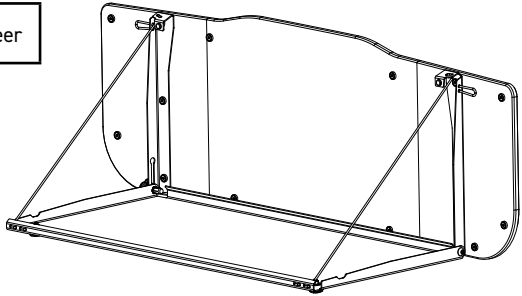
| Main contents |                       |     |                   |
|---------------|-----------------------|-----|-------------------|
| QTY           | COMPONENT             | QTY | COMPONENT         |
| 1             | Rear Door Table       | 1   | RHS Table Bracket |
| 1             | Replacement Door Card | 1   | LHS Table Bracket |

| Door Card Fitting contents |                 |     |                                  |
|----------------------------|-----------------|-----|----------------------------------|
| QTY                        | COMPONENT       | QTY | COMPONENT                        |
| 1                          | M5 Nutsert Tool | 10  | M5 x 25 Countersunk Socket Screw |
| 10                         | M5 Nutsert      | 10  | M5 Dress Washer                  |

| Table contents |                                  |     |                                       |
|----------------|----------------------------------|-----|---------------------------------------|
| QTY            | COMPONENT                        | QTY | COMPONENT                             |
| 1              | Release Knob                     | 2   | M6 Nyloc Nut                          |
| 2              | Bungee Button                    | 1   | M8 Nyloc Nut                          |
| 1              | 10 x 10 x 0.8 Stainless Spring   | 1   | M8 Nylon Washer                       |
| 2              | Paracord 670mm                   | 2   | M6 X 18 X 1.6 DIN Flat Washer         |
| 2              | M6 X 16 Socket Head Cap Screw    | 1   | M6 Nylon Washer                       |
| 1              | M6 x 30 Socket Head Cap Screw    | 6   | M5 x 16 Countersunk Socket Head Screw |
| 1              | M8 x 16 Button Head Socket Screw | 6   | M5 Dress Washer                       |

 **Time**

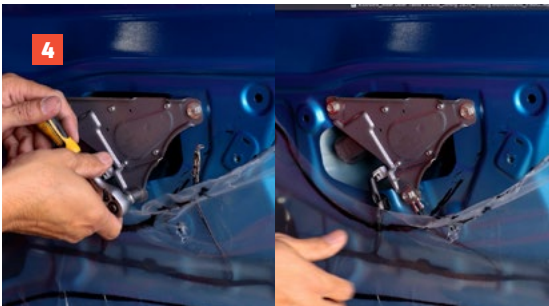
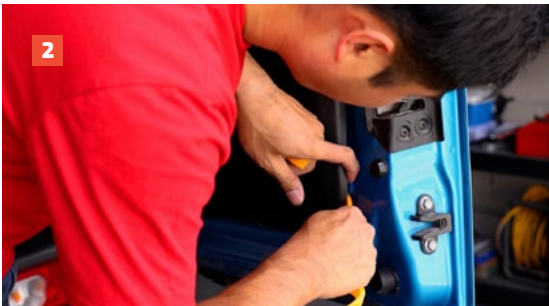
45 minutes / Most of a beer



# Let's get to work.

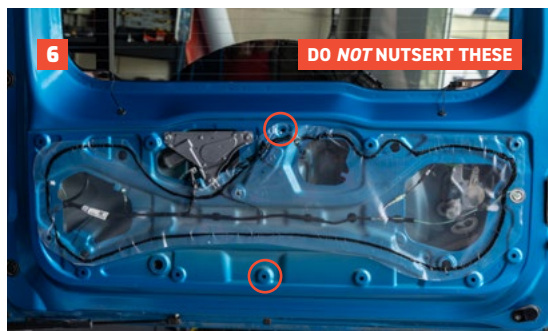
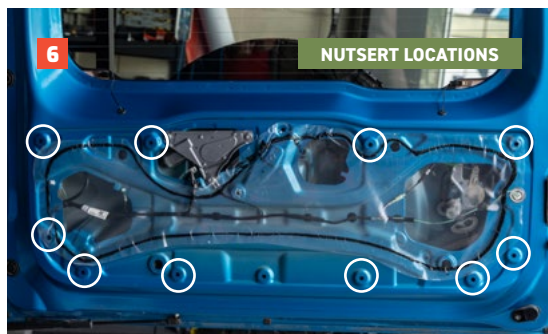
## Preparing the Vehicle

1. Depending on your model, the factory rear luggage box lid may be unable to be retained with the rear door table.  
  
Depending on your preference, you can either remove the entire box by lifting it out, or after the table is installed inspect the clearance and alter the lid if required, by trimming or removing it.
2. Using a plastic trim tool, remove the back trim piece by prying it away from the door. Set aside the trim, we won't be needing it.
3. With the door trim removed, we need to relocate an earth wire on the back door. First, partially peel away the protective plastic to reveal the bolt head. Remove the bolt and set aside.
4. Undo the bolt in the new mounting location as pictured. Flip over the earth wire so it lays flat against the vehicle and secure with the earth wire in place as pictured.
5. Tighten the bolt before reinstating the protective plastic.



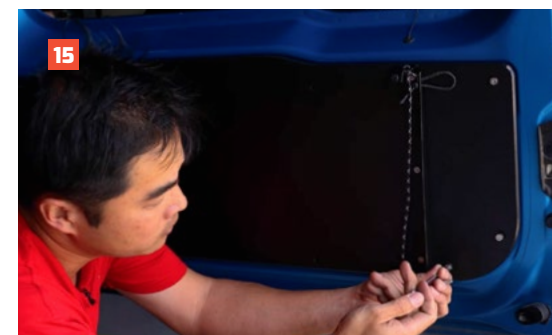
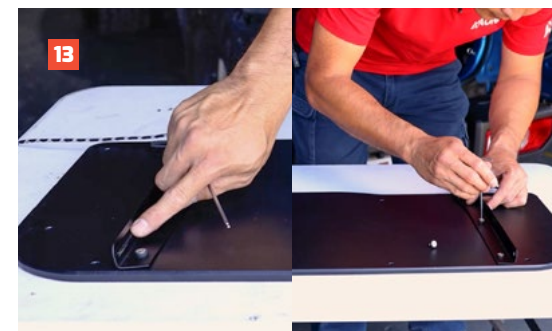
## Nutserting the Rear Door

6. We need to install M5 nutserts into the existing holes from the original trim clips. We will be nutserting all the holes around the edge, except for the middle two, **do not** nutsert these two holes.
7. If you have a nutsert gun, use it to install the nutserts. Otherwise, set up the nutsert on the provided nutsert tool using an allen key and a ring spanner, as pictured. Apply a small dab of grease to the threaded bolt on the nutsert tool, reapply as necessary.
8. Set the nutsert into the hole and tighten until you feel that it has clamped onto the vehicle.
9. Once set, remove the bolt and serrated nut, leaving the nutsert in the rear door.
10. Repeat for the remaining holes.



## Installing the Door Card

11. Prepare all the countersunk mounting bolts with the provided dress washers.
12. Install the table brackets to the threaded inserts in the door card using the small M5 countersunk bolts and dress washers. Ensure the brackets are in the correct orientation and on the correct sides. The bracket with the slotted bottom mount is for the left hand side of the door card (closest to the vehicle).
13. Place the door card on the door, and start by loosely installing the top corners to the nutserts with the remaining M5 countersunk bolts and dress washers.
14. With those installed, the card should self-support while you loosely install all the remaining bolts. The mounting bolts in the top center of the door card may require a bit of pressure against the door to get started, due to the curve of the door.
15. With all the bolts loosely installed, check the door card position for even spacing, and adjust if necessary.
16. With the position confirmed, tighten all the mounting bolts, starting with those in the top centre to ensure the card contours to the door as desired.





## Installing the Table

17. On the right hand side of the table, attach the table to the bracket using the M8 button head screw and M8 round washer, and tighten with the M8 nyloc nut. Ensure the table sits on the outside of the bracket and the washer is between the table and the bracket.

### **If you are also installing the Kitchenette Clip-In Sink Extension:**

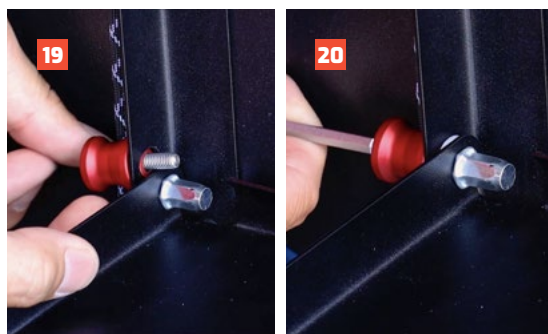
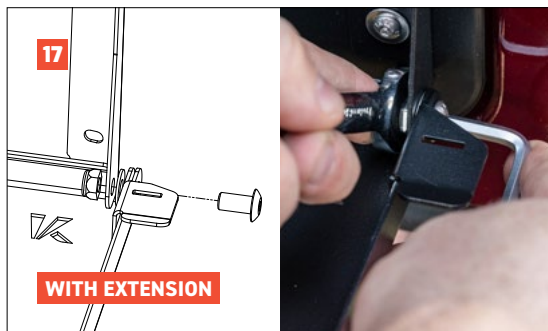
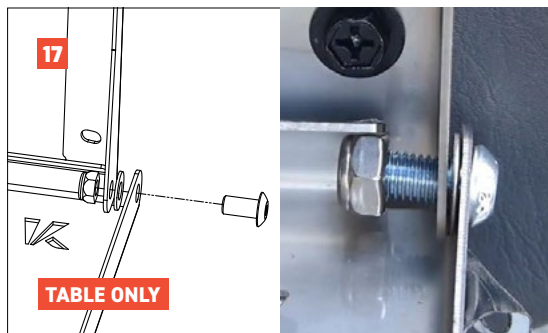
Sandwich the supplied tab bracket between the washer and table on the RHS. Position the tab bracket so the holes line up and the tab bracket hangs over the right-hand side of the table, as pictured.

18. On the left hand side of the table, we need to install the adjustment knob mechanism. This adjustment is designed to counteract the angle of the rear door. To assemble it, place the spring inside the face of the knob, and then insert the bolt.

19. Slip the bolt thread through the slot in the bracket, place the nylon washer over it, and thread the bolt into the closed nutsert on the table. Ensure the table sides on the inside of the bracket, and the washer is between the table in the bracket.

20. Wind the bolt in until tight on the back of the nutsert. This will hold the spring in place and ensure correct tension.

21. The adjustment knob can be used by simply pulling up on the table until it clicks and is engaged. To release, pull the knob to disengage and slide the table down.



## Finishing the Install

22. To attach the support line at the tops of the brackets, weave the cord through the holes and tie a basic knot to secure.

23. To attach the support line to the table, ensure the table is in the upper position with the adjustment knob engaged. Weave the cord through the holes of table as shown. This allows the table level to be easily adjusted, while remaining secure. Repeat on other side.

24. With the support lines in place, confirm the positioning of both the table and table brackets, and tighten all bolts. The table hinge can be tightened to suit the desired friction.

25. To install the bungee buttons, on each side place the M5 button head screw through the front of the button, and secure to the front of the table with the washer nyloc nut.

26. That's it! We're all done – your new table is ready to go! Ensure that when you close the table, the adjustment knob is always disengaged, in the low position.

27. If you're installing a Kitchenette Clip-In Sink Extension or a Clip-In Chopping Board, now's the time to refer to the instructions provided with them.





### **Local Knowledge & Assistance**

We know half the fun of building your dream 4x4 is getting your hands dirty. But we also know that sometimes, things don't go to plan. If in the pursuit to build the ultimate setup you find yourself off-track, we're here to help you get unstuck.

**For further information call 07 3180 1470 or email [info@kaon.com.au](mailto:info@kaon.com.au)**

Disclaimer: The products sold by KAON should not be modified, and are for use only on the vehicles specifically stated. KAON will not be liable for any damages arising out of the use or misuse of its products. It is the customers responsibility to ensure the products are safely and properly used and installed. KAON consistently seeks to improve its products and reserves the right to make changes to any product.