



FITTING INSTRUCTIONS FOR

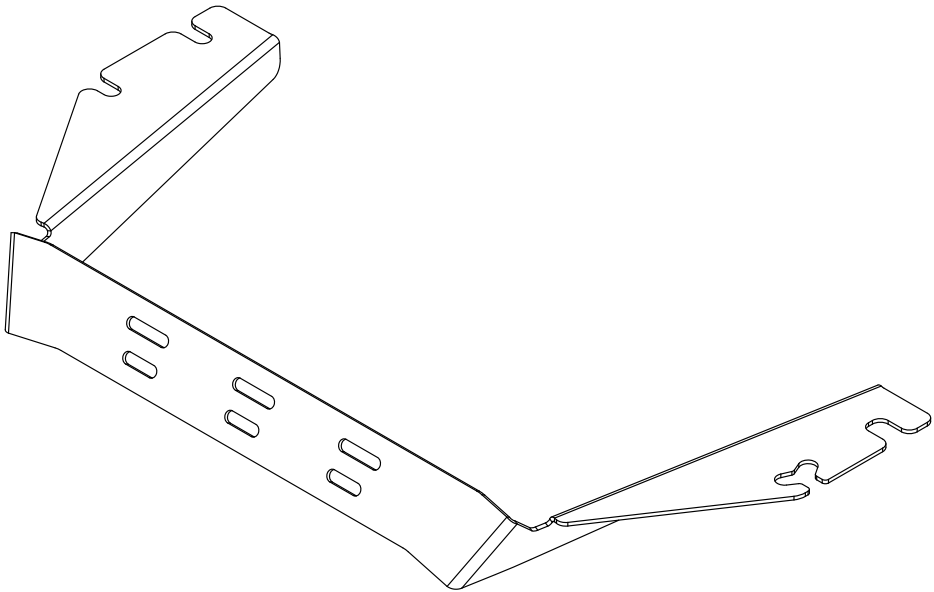
Fire Extinguisher Seat Mount

SKU

KS0568

COMPATIBILITY

Toyota LandCruiser LC300 & Prado 250



Included contents

QTY	COMPONENT
1	Fire Extinguisher Mount
2	M5 x 12 Flanged Hex Bolt G8.8
2	M5 Flanged Nut



Time

30 mins / Half of a Beer

Scan the **QR code** to watch the video installation guide,
or for further information contact KAON on **07 3180 1470** or **info@kaon.com.au**



G8.8 Bolt Torque (Non-Lubricated)

DIAMETER (mm)	5mm	6mm	8mm	10mm	12mm
NEWTON-METRES (Nm)	6 Nm	10 Nm	15 Nm	22 Nm	35 Nm

Let's get to work.

Preparation

1. There are two ways to approach the installation.

The first is to unbolt the seat and remove it entirely from the vehicle to install the mounting bracket. We recommend this as it is easier and gives better access to all the bolts.

The second is to unbolt the seat from the floor, lean it back and install the bracket while the seat remains within the vehicle. Please note that accessibility and ease of install is limited with this method.

2. To remove the seat for the easiest installation method, start by removing the headrest.
3. Slide the seat backwards, so it sits in the rear-most position. Tilt the backrest all the way forward.
4. Using a T50 torx bit, remove the front bolts connecting the seat to the car floor. Set aside.
5. With the front bolts now removed, slide the seat to the furthest forward position.
6. Remove the rear bolts connecting the seat to the car floor, accessing them from the backseat. Set aside.
7. Slide the seat back into a central position on the rails.

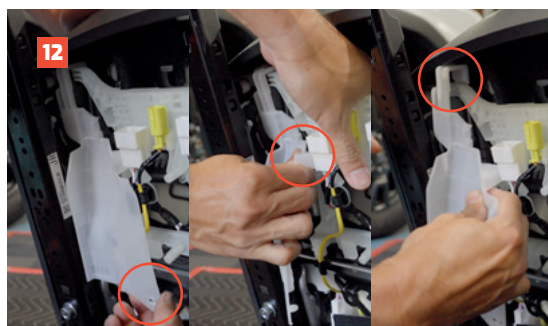
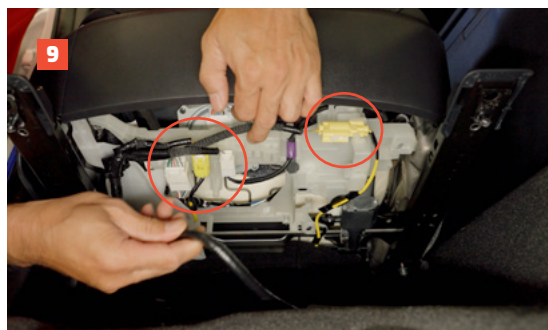


Preparation cont.

8. Gently rock the seat backwards to gain access to the underside, where the electrical components are connected.
9. Unclip the 3 wiring connectors and the 1 wiring loom clip. The seat should now be able to be fully removed from the vehicle.
10. Gently lift the seat out of the car, being careful with the trim on the way out.

Alternatively, if you wish you can lean the seat backwards and proceed with the install from here, noting that this will add complexity to the install.

11. Place the seat on a surface with the backrest laying flat and the underside of the seat facing up.
12. To gain easier access to the mounting bolts, unclip the trim on the underside of the seat. It is secured with two clips, and then can be unhooked to be freed from the seat.



Installation

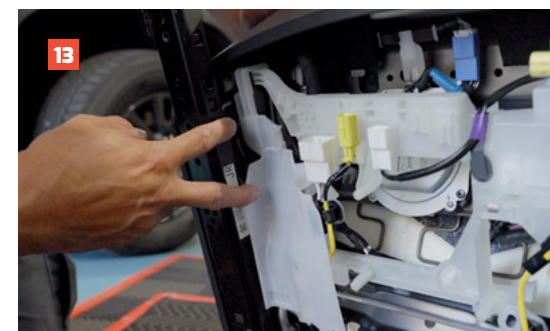
13. Locate the front nuts on each side that connect the seat to the rail.

If you're installing on the drivers side there are four in total, and if you've chosen to install on the passenger side there are two.

14. We want to loosen these bolts to provide 3-4mm gap, so unwind the nuts but don't undo them completely. It can be tricky to get to these, so if you have one, a ratchet spanner is helpful.

15. Place the extinguisher bracket in position in between the seat rails, sliding the cutouts on each side over the bolts until the bracket is securely in place. The bracket can flex and be squeezed slightly in order to fit between the rails.

On the drivers side, the bracket takes up all 4 mounting slots. On the passenger side, the bracket mounts using only the back two slots. When installed correctly, the mount should sit parallel with the front of the seat and be almost flush with the slide mechanism.



Installation cont.

16. With the extinguisher bracket in position, resecure the bolts.
17. Reinstall the plastic trim by clipping it into the underside of the seat.
18. Place the seat back in position in the vehicle and reattach the electrical components and loom clip.
19. Confirm that the extinguisher bracket slides with the seat when moving forward and backward.
20. Now you can mount your extinguisher. We recommend no greater than a 1kg extinguisher, and provide M5 bolts and nuts to secure it.
21. Reattach the rails to the vehicle using the bolts set aside earlier. Tighten until secure.
22. Replace the headrest.
23. That's it, you're done!





Local Knowledge & Assistance

We know half the fun of building your dream 4x4 is getting your hands dirty. But we also know that sometimes, things don't go to plan. If in the pursuit to build the ultimate setup you find yourself off-track, we're here to help you get unstuck.

For further information call 07 3180 1470 or email info@kaon.com.au

Disclaimer: The products sold by KAON should not be modified, and are for use only on the vehicles specifically stated. KAON will not be liable for any damages arising out of the use or misuse of it's products. It is the customers responsibility to ensure the products are safely and properly used and installed. KAON consistently seeks to improve it's products and reserves the right to make changes to any product.