



FITTING INSTRUCTIONS FOR

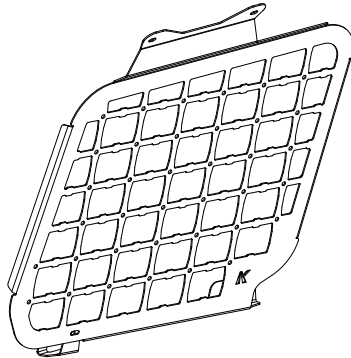
Large Side Molle Panels

SKU

KS0457

COMPATIBILITY

Toyota LandCruiser LC200



Included contents

QTY	COMPONENT	QTY	COMPONENT
2	Large Side Molle Panel (LHS/RHS)	4	Black TPU Nut Retainer
2	Rear Lower Mount Bracket (LHS/RHS)	1	M6 x 50 Hex Bolt (Installation Tool)
4	Self Tapping Screw	6	M6 x 16 Flanged Hex Bolt G8.8
2	M10 x 1.25 x 40mm Hex Bolt	4	M6 Aluminium Nut Block
2	M10 x 30 x 2.5 DIN Flat Washer	2	M6 Flanged Nut
2	25mm Aluminium Spacer	2	M6 X 18 X 1.6 DIN Flat Washer



Tools

22mm Hole Saw & Drill



Time

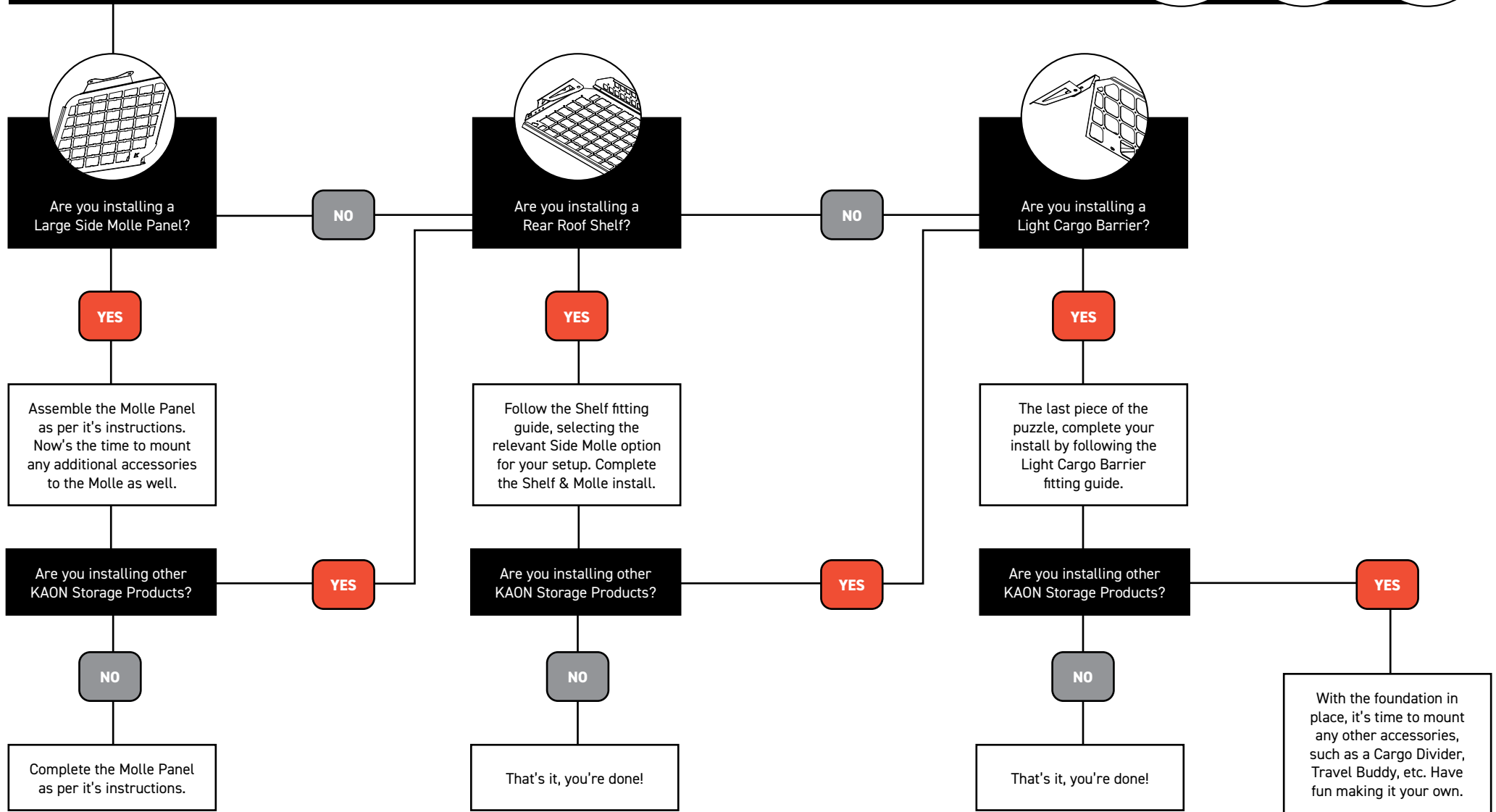
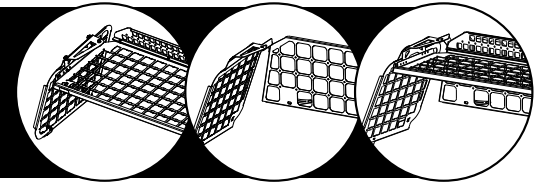
30 minutes / Half a beer

Scan the **QR code** to watch the video installation guide,
or for further information contact KAON on **07 3180 1470** or info@kaon.com.au



It all works together.

All our storage products work together, but there is a certain order to installing.
Let's work out the best order for your setup, shall we?



With your setup order sorted, let's get to the good part: installing. →

Let's get to work.

Preparing the Vehicle

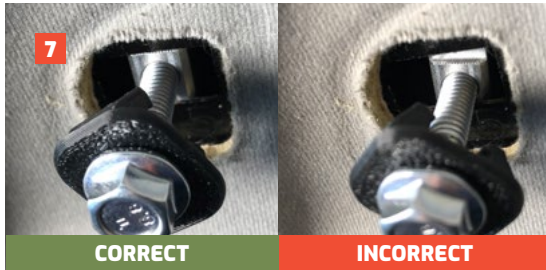
1. Pry off the plastic cover on the rear grab handle mounts.
2. Use a screwdriver to squeeze on the metal clips to free the grab handle.
3. Squeeze the metal clips to free them from the opening. Set aside.
4. Ensure there is 2mm of clearance around the rectangular clip opening. If required, push the lining away, or slightly trimming the roof lining.



M6 Roof Nut Installation

IMPORTANT: Please read and understand the steps required to install and retain the M6 nut blocks in the roof. Refer to our Fitting Guide video (find a QR code on the cover) for more details.

5. The supplied M6 x 40 hex bolt is used to install the nut block and retainer in the roof cavity.
6. Place the retainer and nut block on the hex bolt as shown in the picture. The retainer will clip over the nut block to hold it in the roof cavity.
7. Insert the nut block into the rectangular opening in the roof. Rotate the block 90 degrees so that the raised spigot on the nut block locates in the rectangular opening.
8. While pulling back on the bolt, insert one leg of the retainer and push to clip in place.
9. Push the other leg up into the cavity and ensure that retainer is securely held in the roof and that the aluminum nut is held in place properly. Pull on the hex bolt to confirm that the aluminum nut is position properly and held securely.
10. Unwind and remove the bolt.
11. Repeat on the other side.



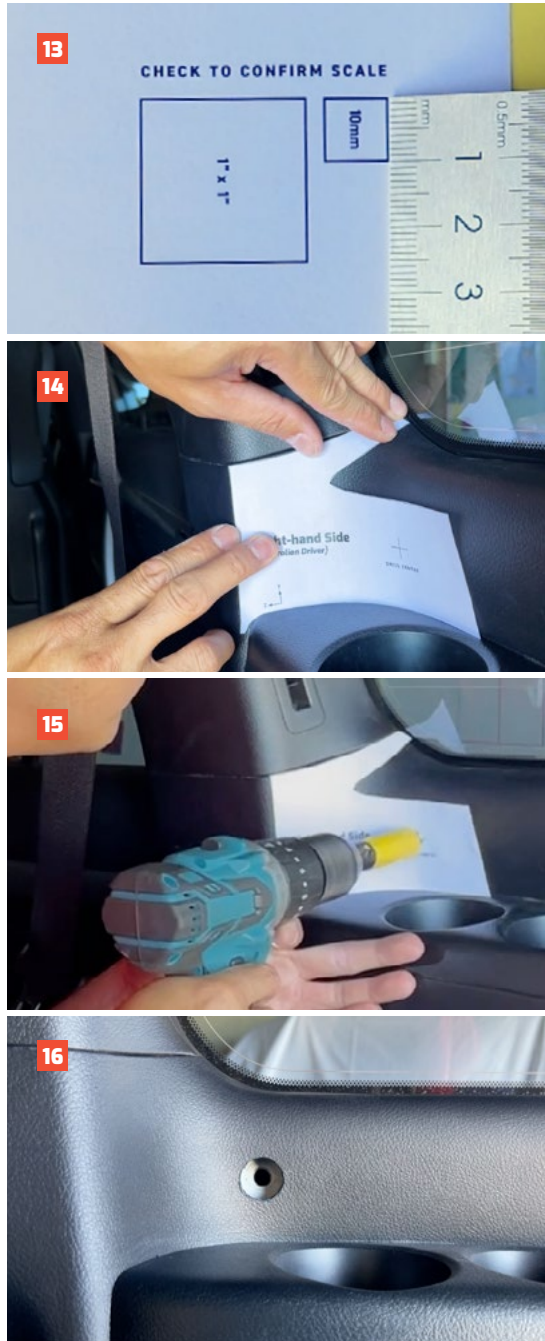
Preparing the Panel

12. Use the M6 bolt, washer and nuts to install the Rear Lower Mount Bracket to the underside of the Large Molle Panel as shown. It should angle towards the rear. Only loosely attach the bracket, in order to accommodate adjustment.



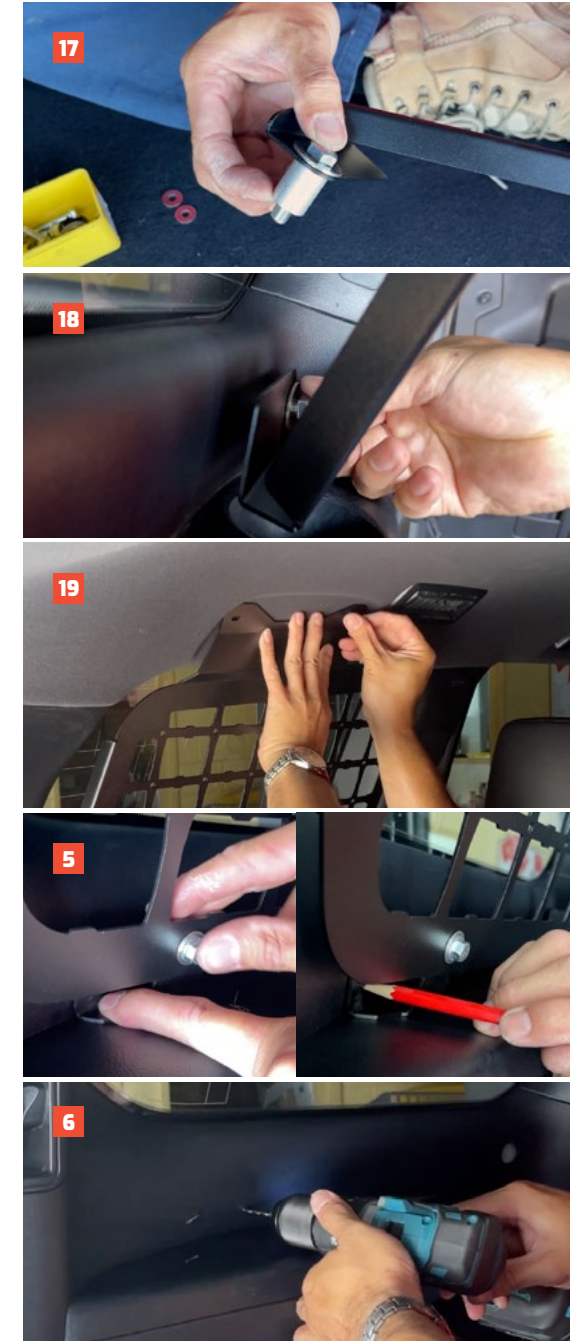
Preparing the Bottom Mounts

13. With the nuts installed in the roof, next we need to drill a hole to access the lower captive nut in the vehicle frame, which sits behind the plastic trim. We've supplied a template for this, but first ensure that you check the scale on your template as shown. Once confirmed, cut the template out for each side.
14. With the template cut out, position it on the vehicle using tape or blue tack as shown. Align the bottom edge with the crease in the plastic, and the top edge to the trim line on the C-pillar. Ensure there is no air gap in the middle of the template.
15. Once the template is secured in place, drill a hole so the 25mm spacer can pass through. Align a 22mm hole saw to the centre mark and drill your hole. We recommend removing the paper once you have a pilot hole started.
16. Repeat on the other side.



Preparing the Bottom Mounts cont.

17. Place the M10 bolt, washer and 25mm spacer on the the bottom mounting point of the Large Molle Panel, as shown.
18. Thread the bolt/spacer through the hole we drilled in the trim before loosely tightening into the captive nut behind.
19. Carefully align the M6 bolts with the holes in the roof, making sure not to push the captive nuts out of the retainers. Loosely tighten.
20. With the Molle Panel loosely in place, make any necessary positioning adjustments. Push the Rear Lower Mount Bracket firmly against the trim so that it sits flush along the back and bottom.
21. Use a pencil to mark the bracket holes on the trim.
22. Undo the three bolts and remove the panel. Use a 3mm drill bit to drill two pilot holes in the marked positions on the trim.



Finishing Installation

23. With the holes drilled, reattach the the Molle Panel as per steps 17–20.

If you're installing with any other KAON storage products, sandwich their handle bracket on top of the Molle Panel, with the nutserts towards at the front of the vehicle.

If you're installing the Standalone Shelf and the Light Cargo Barrier, you only need the Standalone Shelf handle brackets.

24. Use the provided self-tapping screws to secure the Rear Lower Mount Bracket to the drilled holes.

25. Make any necessary adjustments to the panel position before tightening all bolts.

26. That's it, you're done! Your new Panel is perfect for holding any MOLLE compatible pouches, and also has holes suitable for QuickFists or other accessories.

If you're adding a Standalone Shelf or Light Cargo Barrier:

27. Follow steps in the relevant instructions provided, ensuring to follow the installation order mentioned on page 2-3.



This page is intentionally left blank.

Bolt Torque

DIAMETER (mm)	5mm	6mm	8mm	10mm	12mm
NEWTON-METRES (Nm)	5 Nm	9 Nm	22 Nm	44 Nm	77 Nm



Local Knowledge & Assistance

We know half the fun of building your dream 4x4 is getting your hands dirty. But we also know that sometimes, things don't go to plan. If in the pursuit to build the ultimate setup you find yourself off-track, we're here to help you get unstuck.

For further information call 07 3180 1470 or email info@kaon.com.au

Disclaimer: The products sold by KAON should not be modified, and are for use only on the vehicles specifically stated. KAON will not be liable for any damages arising out of the use or misuse of its products. It is the customers responsibility to ensure the products are safely and properly used and installed. KAON consistently seeks to improve its products and reserves the right to make changes to any product.