



FITTING INSTRUCTIONS FOR

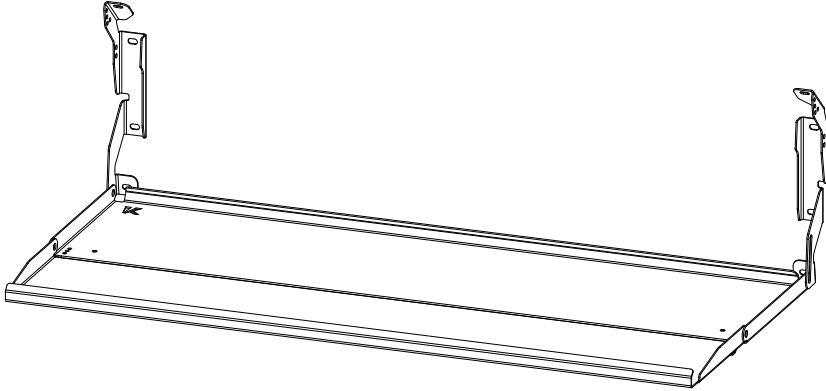
Rear Door Drop Down Table

SKU

KS0083

COMPATIBILITY

Toyota FJ Cruiser



Included contents

QTY	COMPONENT	QTY	COMPONENT
1	Main Rear Door Table Section	3	M8 x 16 Dome Head Bolts
1	Fold-out Rear Door Table Section	3	M8 x 17 x 1.2 Washers
2	Mounting Brackets	3	M8 Nyloc Nuts
8	Self Tapping Screws	2	Plastic Cord Buttons
10	M5 x 16 Dome Head Screws	1	Adjustable Handle
8	M5 DIN Washers	1	M6 DIN Washer
10	M5 Nyloc Nuts		



Time

30 minutes / Half a beer

For further information contact KAON on **07 3180 1470** or info@kaon.com.au

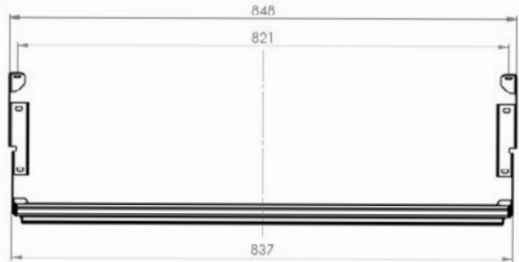
Bolt Torque					
DIAMETER (mm)	5mm	6mm	8mm	10mm	12mm
NEWTON-METRES (Nm)	5 Nm	9 Nm	22 Nm	44 Nm	77 Nm

Let's get to work.

Preparation

1. First up, remove the plastic protective layer to reveal your shiny new brackets and rear door table. To install, you will require a pencil, ruler (tape), 3mm drill bit and drill, 5mm Allen wrench, 8mm socket and a 13mm spanner.
2. Mark the position of the brackets on the lower cavity of the door. Using a pencil, mark the centre line of the lower cavity. Refer to Assembly drawing for dimensions.
3. On the top bevel of the cavity, mark out the bracket position. The lines should be 848mm apart and symmetrical to the centre line.
4. On the lower face of the door below the cavity, mark two lines for the alignment of the brackets. The lines should be 837mm apart and symmetrical to the centre line.

2



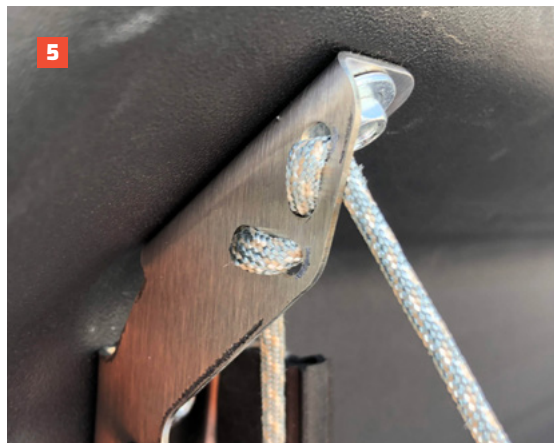
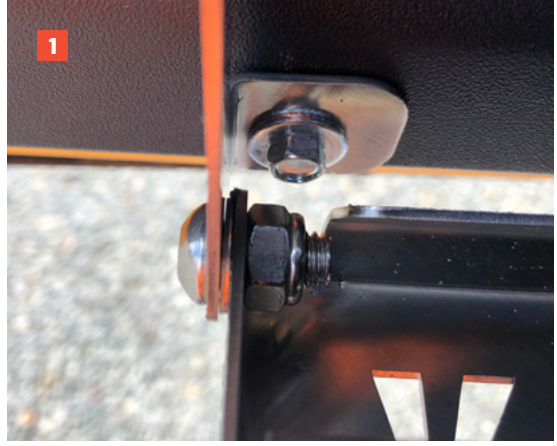
Bracket Installation

1. Position the bracket on the rear door. The bracket with the long-slotted hole is positioned closest to the door hinge. Line up the top and bottom outside edge of the bracket with the lines marked in the previous step.
2. Mark the centre of the 4 mounting slots and then drill 3mm holes.
3. Attach the bracket using self-tapping screws.
4. Whatever you do, **DO NOT OVERTIGHTEN** the screws.
5. Repeat for the other bracket.



Main Table Section Installation

1. Attach the larger main table section to the hinge brackets. The table sits inside the brackets and uses an M8 washer to provide clearance. Install an M8 button head bolt washer and lock nut to the left bracket. Make sure the washer sits between the hinge bracket the table.
2. Install the M6 adjustable machinery handle to the right-hand side bracket.
3. Apply a little grease or oil to the thread prior to installation. The position of the black lever can be adjusted by pulling the spring-loaded lever towards the car.
4. Make sure there is an M6 washer between machinery handle and the hinge bracket.
5. Attach the support cords to the table and brackets as per the image. Adjust so that the table is level.



Fold-out Table Section Installation

1. Attach the smaller fold out table section using M8 bolts, washers and lock nuts. Place the washers between the tables to allow clearance when folding.
2. Tighten the hinge bolts and adjust so that the hinges are smooth and tight.
3. Attach the plastic buttons using the M5 x 16 dome head bolt and nyloc nuts.



Operating the Table

1. To open, loosen off the M6 machinery handle.
2. Unlatch the elastic cords and fold out the table. Lift the right-hand side of the table up to the top of the slot and tighten the handle. The table should now sit level. Open up the fold out table section.
3. **IMPORTANT:** Always ensure the machinery handle is pointing upwards before closing the door.



Scan the **QR code** to watch the video guide on using the machinery handle to level your table.



Optional Step

We've found some folks prefer the extra security of bolting through the plastic panel. If this sounds like you, here's what you need to do:

1. Remove the rear door table by removing 8 self tapping screws.
2. Carefully remove the plastic panel off the rear door.
3. Drill and enlarge the mounting holes to 5mm.
4. Attach the brackets to the plastic panel using M5 dome head bolts, washers and nyloc nuts. Place the supplied washer on the inside of the plastic panel.
5. Check the position of the brackets and tighten all mounting bolts.
6. Reassemble plastic panel and rear door table.



Local Knowledge & Assistance

We know half the fun of building your dream 4x4 is getting your hands dirty. But we also know that sometimes, things don't go to plan. If in the pursuit to build the ultimate setup you find yourself off-track, we're here to help you get unstuck.

For further information call 07 3180 1470 or email info@kaon.com.au

Disclaimer: The products sold by KAON should not be modified, and are for use only on the vehicles specifically stated. KAON will not be liable for any damages arising out of the use or misuse of it's products. It is the customers responsibility to ensure the products are safely and properly used and installed. KAON consistently seeks to improve it's products and reserves the right to make changes to any product.