



FITTING INSTRUCTIONS FOR

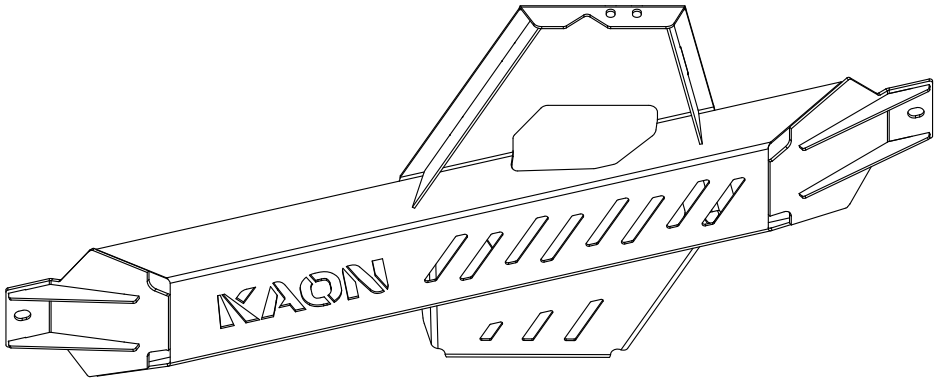
Transfer Actuator Guard

SKU

KS0009

COMPATIBILITY

Toyota Prado 120 & 150 (Diesel Only)



Included contents

QTY	COMPONENT	QTY	COMPONENT
1	Transfer Actuator Guard	1	M10 Slot Nut with Wire
1	Transmission Guard Spacer	2	M10 x 30 x 2.5 DIN Flat Washer
2	M8 x 25 Flanged Hex Bolt G8.8	2	M10 x 25 Flanged Hex Bolt G8.8
2	M8 x 24 x 2.0 DIN Flat Washer		



Time

30 minutes / Half a beer

For further information contact KAON on **07 3180 1470** or info@kaon.com.au

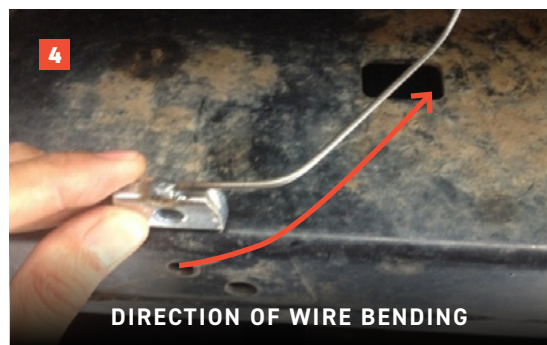
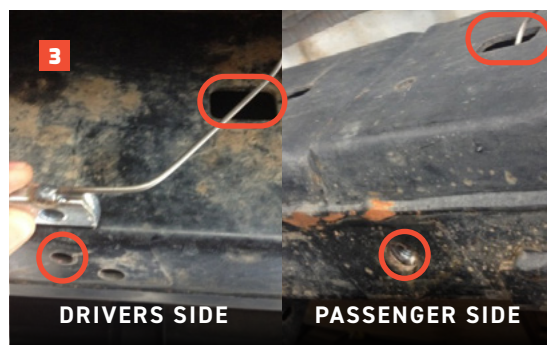
G8.8 Bolt Torque

DIAMETER (mm)	5mm	6mm	8mm	10mm	12mm	14mm
LUBRICATED (Nm)	5 Nm	8 Nm	16 Nm	33 Nm	56 Nm	84 Nm
NON-LUBRICATED (Nm)	6 Nm	10 Nm	22 Nm	44 Nm	77 Nm	112 Nm

Let's get to work.

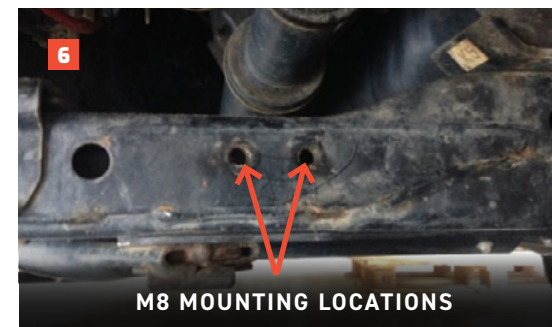
Preparation

1. Before we begin, ensure all mounting surfaces are clean, free of dirt and grime, and put some grease or anti-seize compound in the mounting holes.
2. Remove the Toyota factory guard from the transfer case, then replace any bolts that were removed during this process.
3. Locate the mounting holes in the chassis rail on both the driver's side, and the passenger side, as pictured.
4. Bend an M10 Slot Nut's wire for each side that the path of the wire aligns with the mounting holes shown.
5. Place each Slot Nut into position inside the chassis rail by using the wire to thread it through the larger opening.



Installation

6. Locate the two captive M8 mounting holes in the centre of the cross member, as pictured. They can be found directly under the tail shaft.
7. If you have an ARB Underbody Guard, remove the two bolts that would be located in these mounting holes.
8. The Transmission Guard Spacer is required between the guard and the cross member.
9. Place the Actuator Guard into position and slackly secure to the cross member with the two M8 bolts and washers, by only a few threads. Do not tighten yet.
10. We recommend getting a mate to assist you with this part. Lift the guard and make sure all bolt holes are aligned, and finger tighten each bolt. Ensure that you adjust the position as needed.
11. Tighten all bolts to the recommended torque settings.
12. Trim or bend the M10 Slot Nut wires on each side out of the way, making sure to leave enough wire to make accessible for future removal.
13. That's it - you're done!





Local Knowledge & Assistance

We know half the fun of building your dream 4x4 is getting your hands dirty. But we also know that sometimes, things don't go to plan. If in the pursuit to build the ultimate setup you find yourself off-track, we're here to help you get unstuck.

For further information call 07 3180 1470 or email info@kaon.com.au

Disclaimer: The products sold by KAON should not be modified, and are for use only on the vehicles specifically stated. KAON will not be liable for any damages arising out of the use or misuse of it's products. It is the customers responsibility to ensure the products are safely and properly used and installed. KAON consistently seeks to improve it's products and reserves the right to make changes to any product.